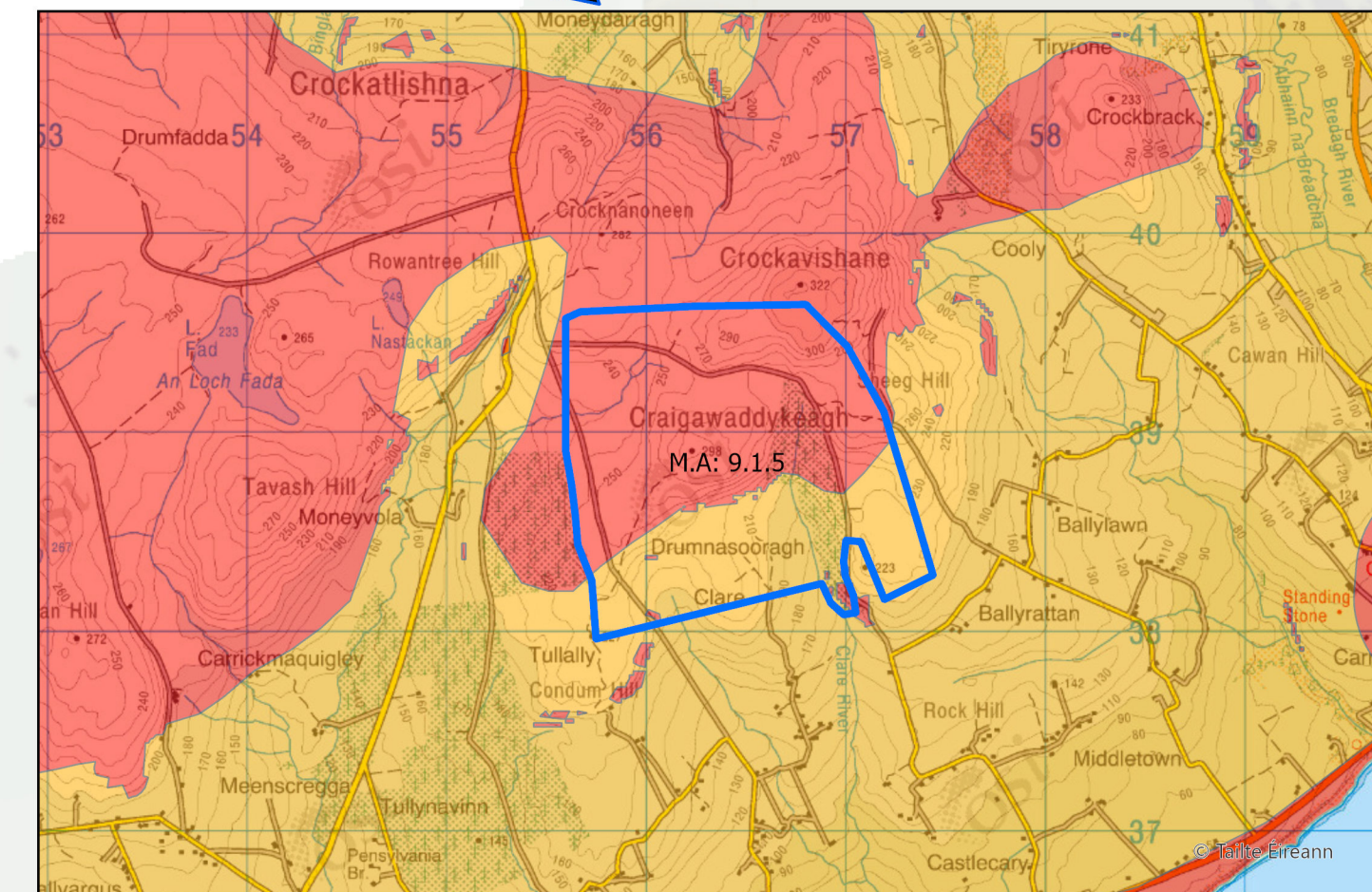
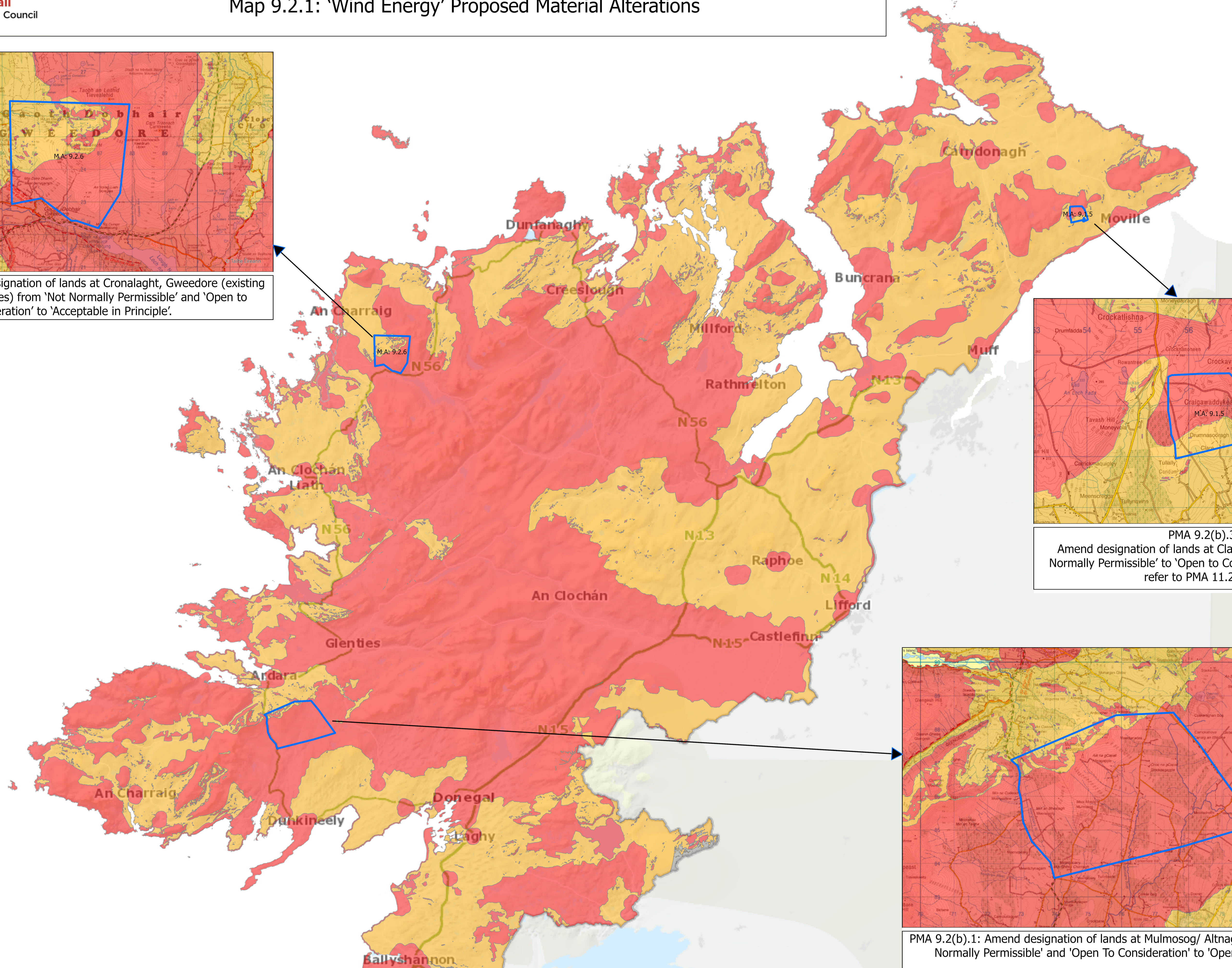
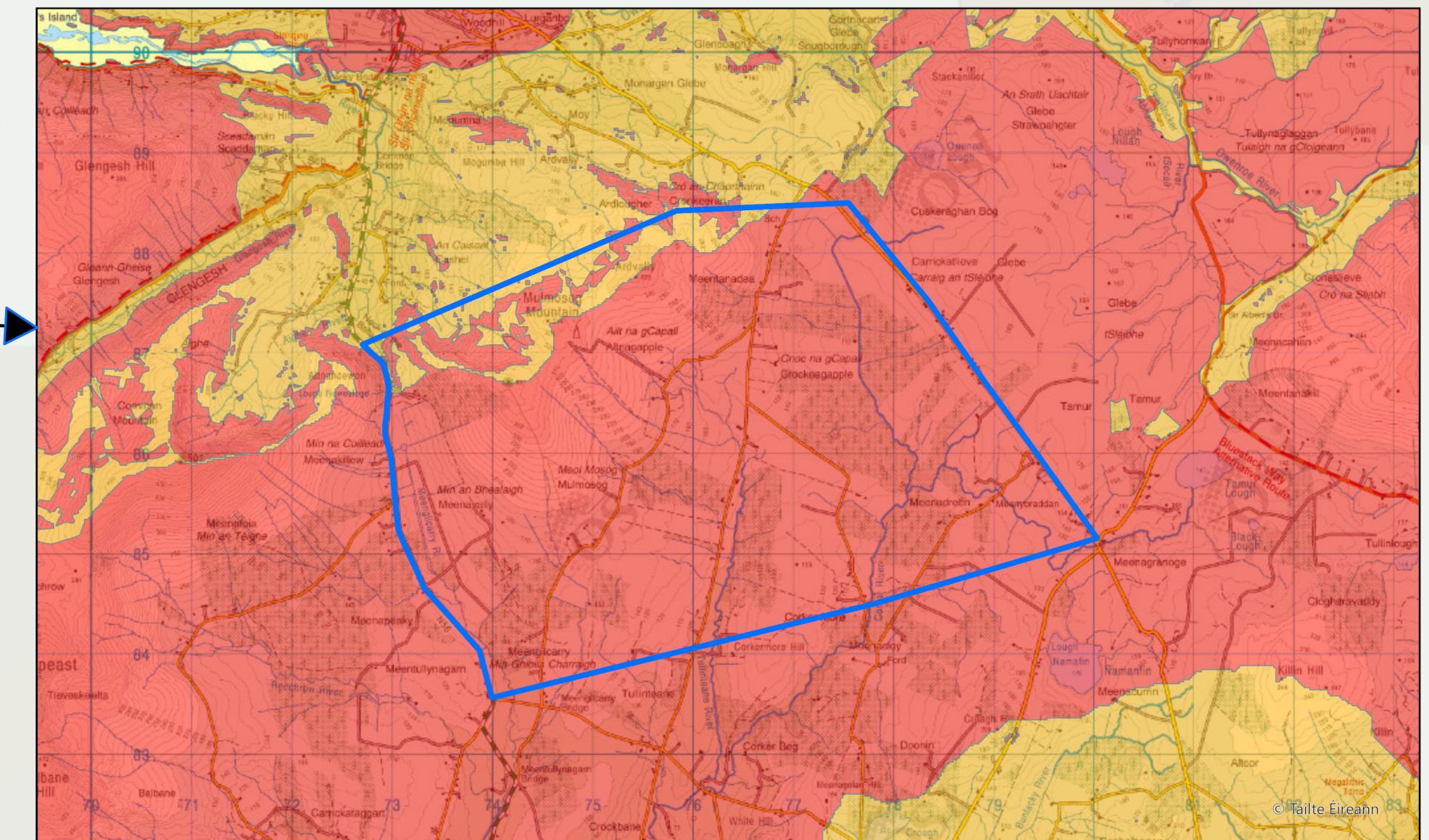


PMA 9.2(b).2: Amend designation of lands at Cronalaght, Gweedore (existing windfarm of 13 turbines) from 'Not Normally Permissible' and 'Open to Consideration' to 'Acceptable in Principle'.



PMA 9.2(b).3: Amend designation of lands at Clare, Redcastle from 'Not Normally Permissible' to 'Open to Consideration' [please also refer to PMA 11.2(b).3]



PMA 9.2(b).1: Amend designation of lands at Mulmosog/ Altnagapple, Ardara from 'Not Normally Permissible' and 'Open To Consideration' to 'Open To Consideration'.

- Proposed Material Alterations | Athruithe Ábhartha Beartaithe
- Acceptable In Principle | Inghlactha i bPrionsabal
- Not Normally Permissible | Ní bheadh cead de ghnáth
- Open To Consideration | Ar Fáil le Breithniú