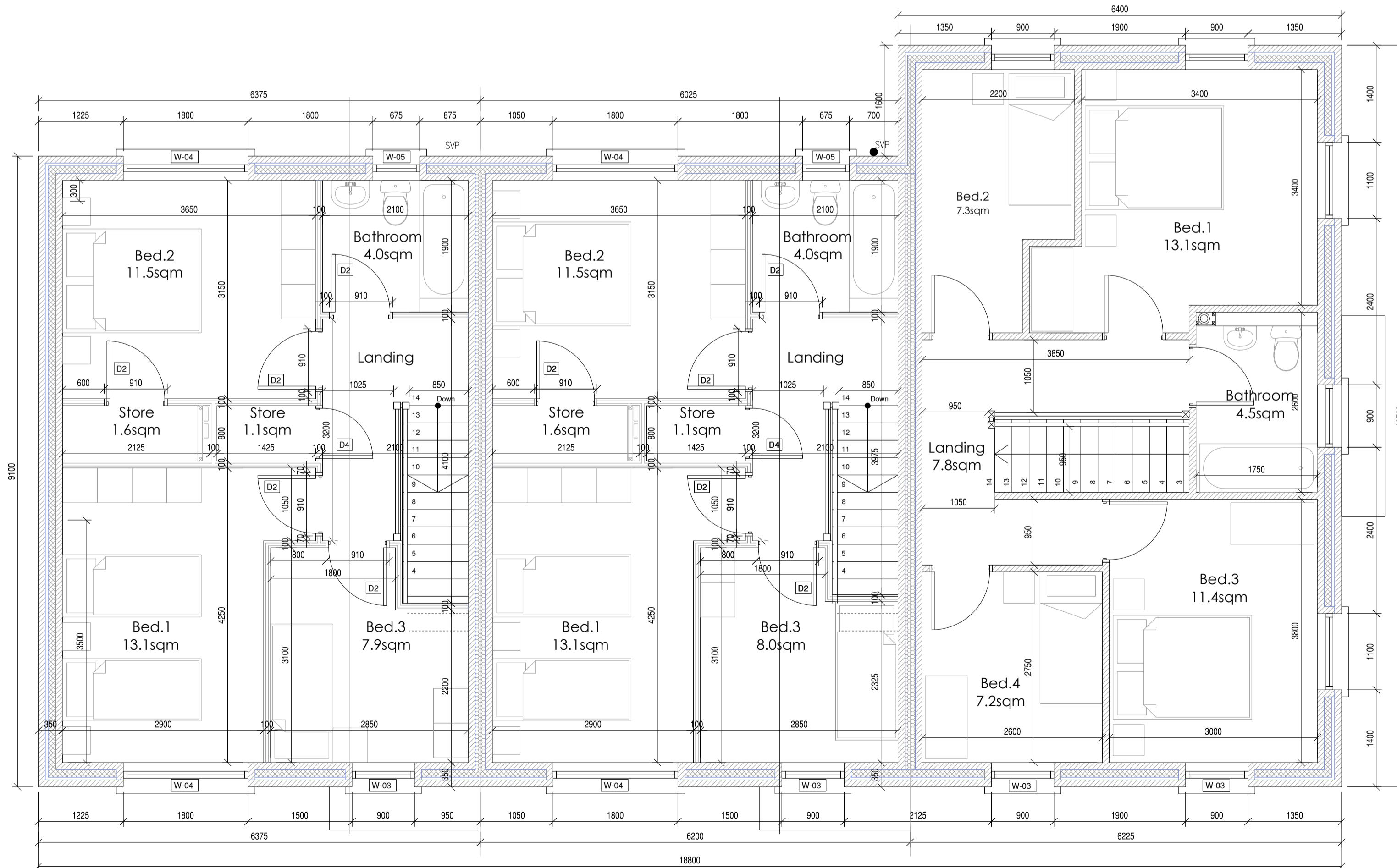
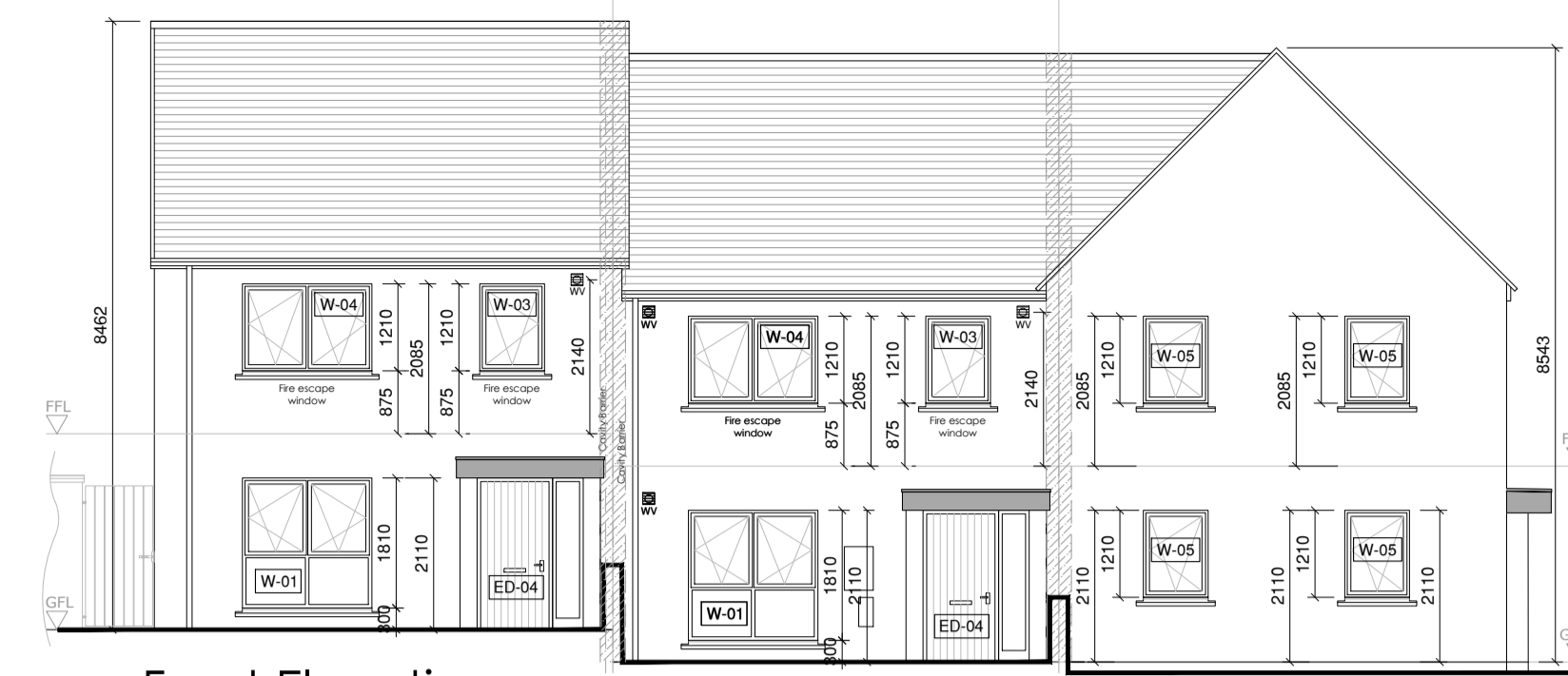


Ground Floor Plan. Scale 1:50

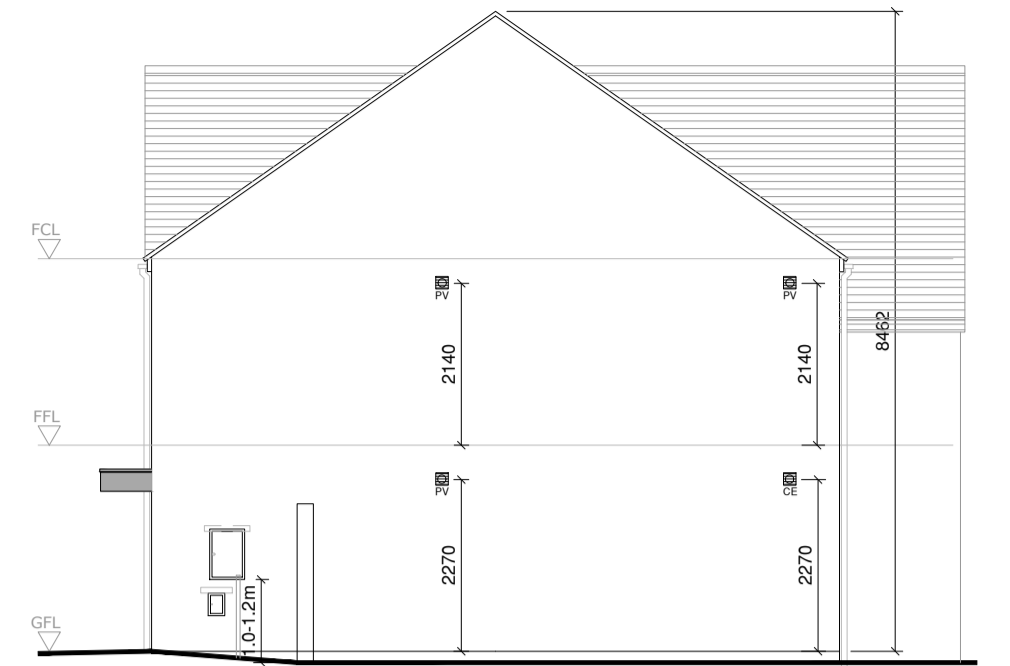
Total Floor Area HT3 - 82m²
Total Floor Area HT18 - 111m²



First Floor Plan. Scale 1:50



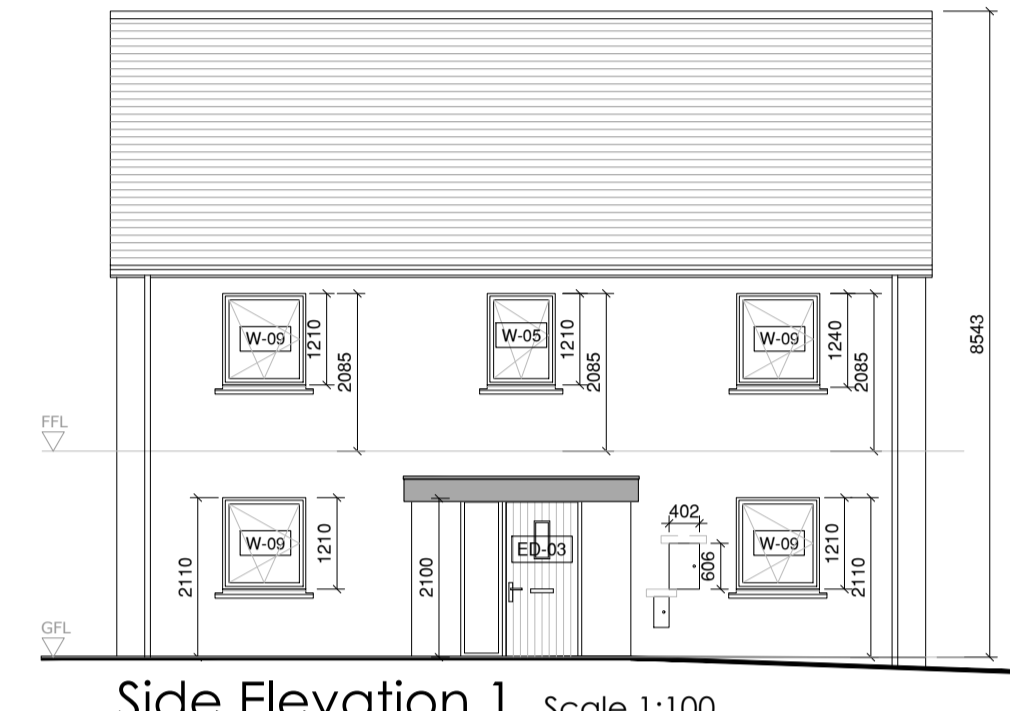
Front Elevation. Scale 1:100



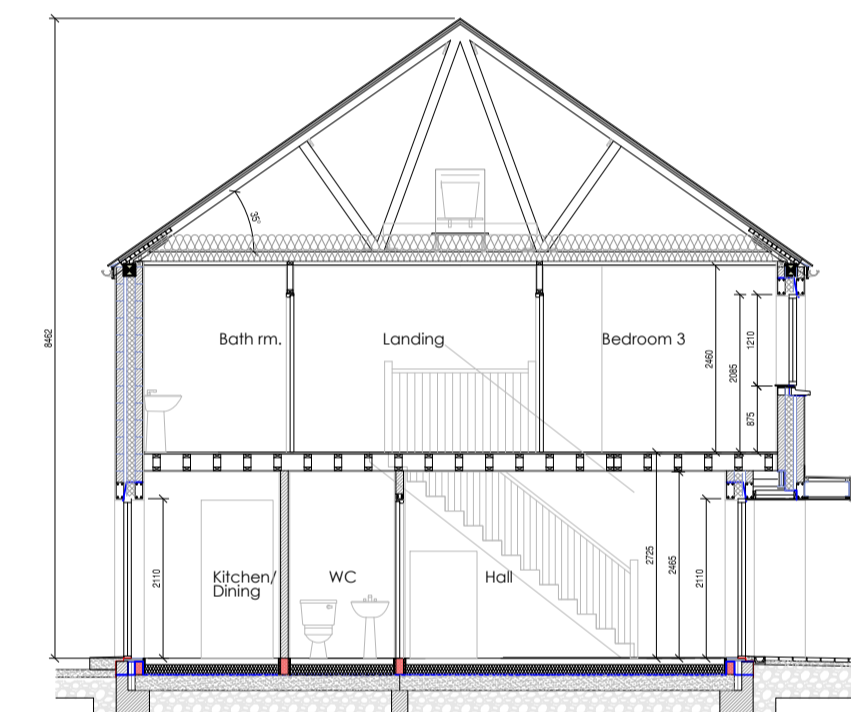
Side Elevation 2. Scale 1:100



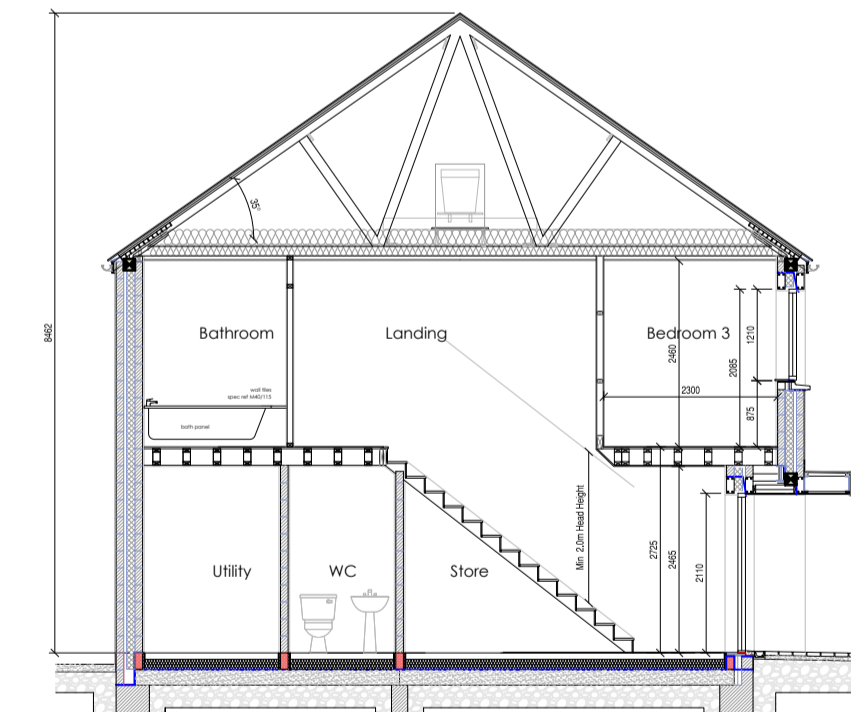
Rear Elevation. Scale 1:100



Side Elevation 1. Scale 1:100



Section A-A Scale 1:100



Section B-B Scale 1:100

Finishes

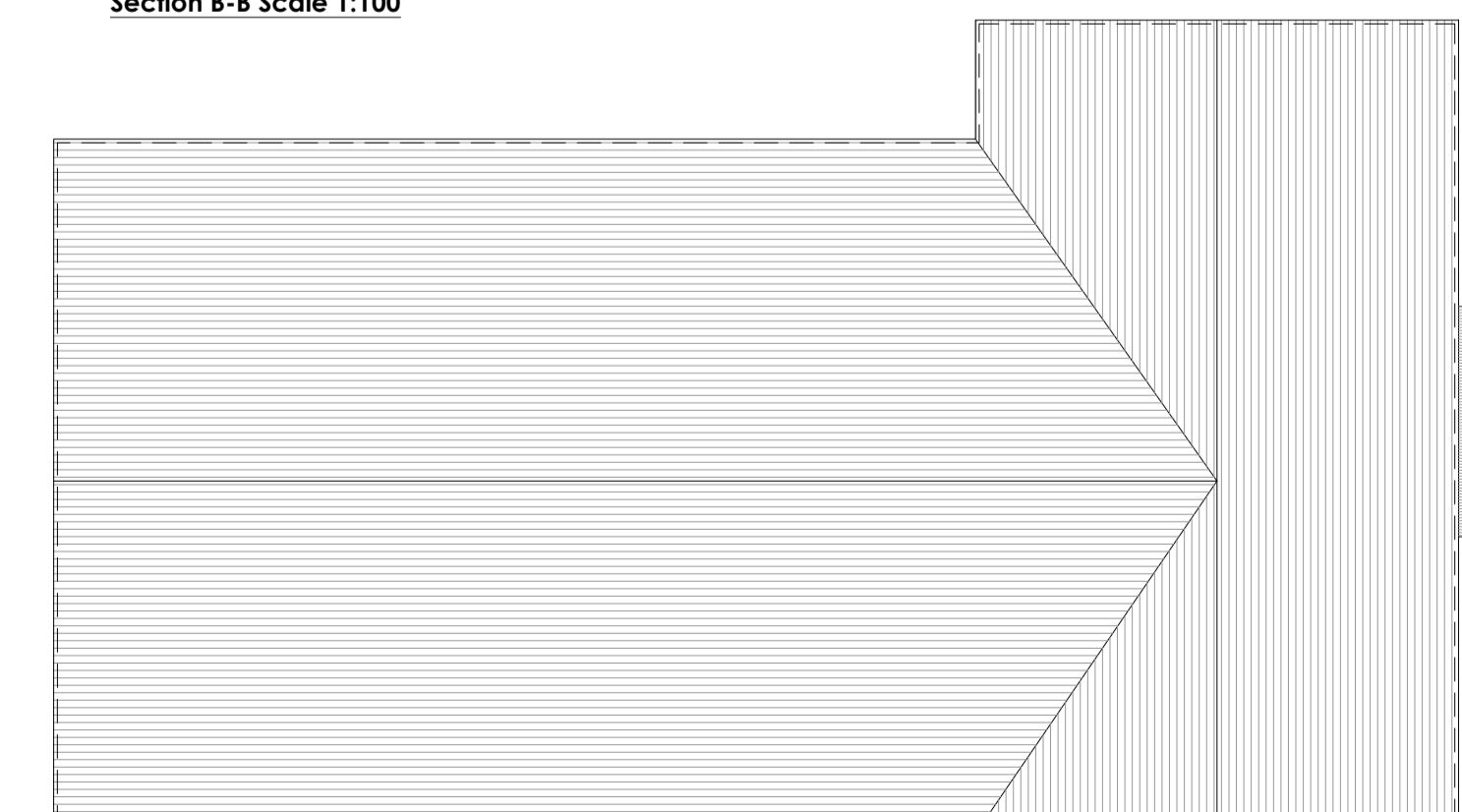
- Blue/black slates to roof.
- Aluminum / Pvc fascia, soffit, gutters and downpipes.
- Double/triple glazed AluClad / PVC window units.
- Proprietary render system with painted finish to walls.
- Galvanised steel balustrade railings to balconies.

Schedule of Areas		
House Type 6 - 3Bed 5 Person 2 storey house		
Room	Area Req.	Area Provided
Total Floor Area	92m ²	94.0m ²
Kitchen / Dining / Living	30m ²	32.7m ²
Bedroom 1 (Double)	13.0m ²	13.1m ²
Bedroom 2 (Double)	11.4m ²	11.5m ²
Bedroom 3 (Single)	7.1m ²	7.9m ²
Storage	5m ²	6.9m ²
External Shed	-	4m ²

Notes:
- Storage requirement includes external storage shed.
- Target values as outlined in Sustainable Urban Housing: Design Standards for New Apartments. Guidelines for Planning Authorities.

Schedule of Areas		
House Type 18 - 4 Bed 6 Person 2 storey house		
Room	Area Req.	Area Provided
Total Floor Area	100m ²	111.0m ²
Kitchen / Dining / Living	37m ²	42.7m ²
Bedroom 1 (Double)	13.0m ²	13.1m ²
Bedroom 2 (Single)	7.1m ²	7.3m ²
Bedroom 3 (Double)	11.4m ²	11.4m ²
Bedroom 4 (Single)	7.1m ²	7.2m ²
Storage	5m ²	4.7m ²
External Shed	-	4m ²

Notes:
- Storage requirement includes external storage shed.
- Target values as outlined in Sustainable Urban Housing: Design Standards for New Apartments. Guidelines for Planning Authorities.



Roof Plan. Scale 1:100

Revisions

X XX/XX/XX

Rev: Date: Details:

Donegal County Council
Architects Office



DCC Tel: 074 91 53900 DCC Fax: 074 91 72812

PART 8 SUBMISSION

Project:
Proposed Housing Development at
Mulroy View (Phase 2),
Tamney,
Co. Donegal

Drawing Title:

Units 18-20
HT17 & HT6

Drawing No: PL09

Date: July 2023

Scale: 1:100 / 1:50 @ A1

Drawn / Checked by:
DCC

Job No: HCL 1322