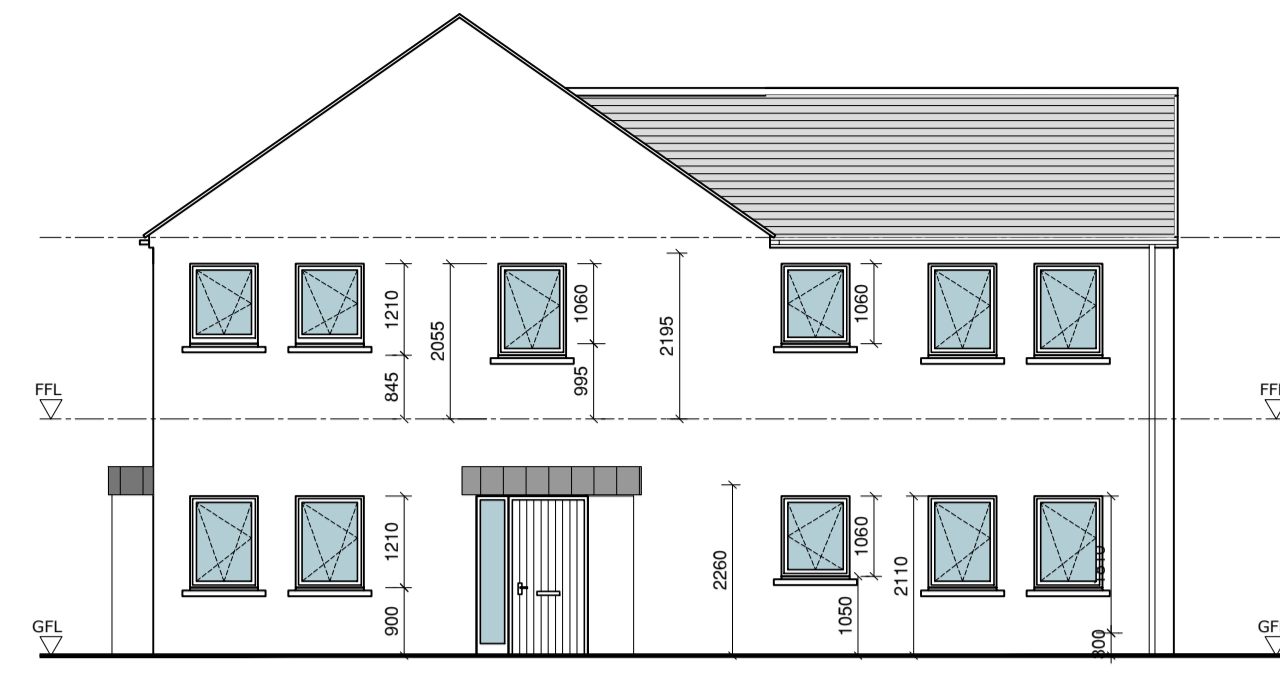
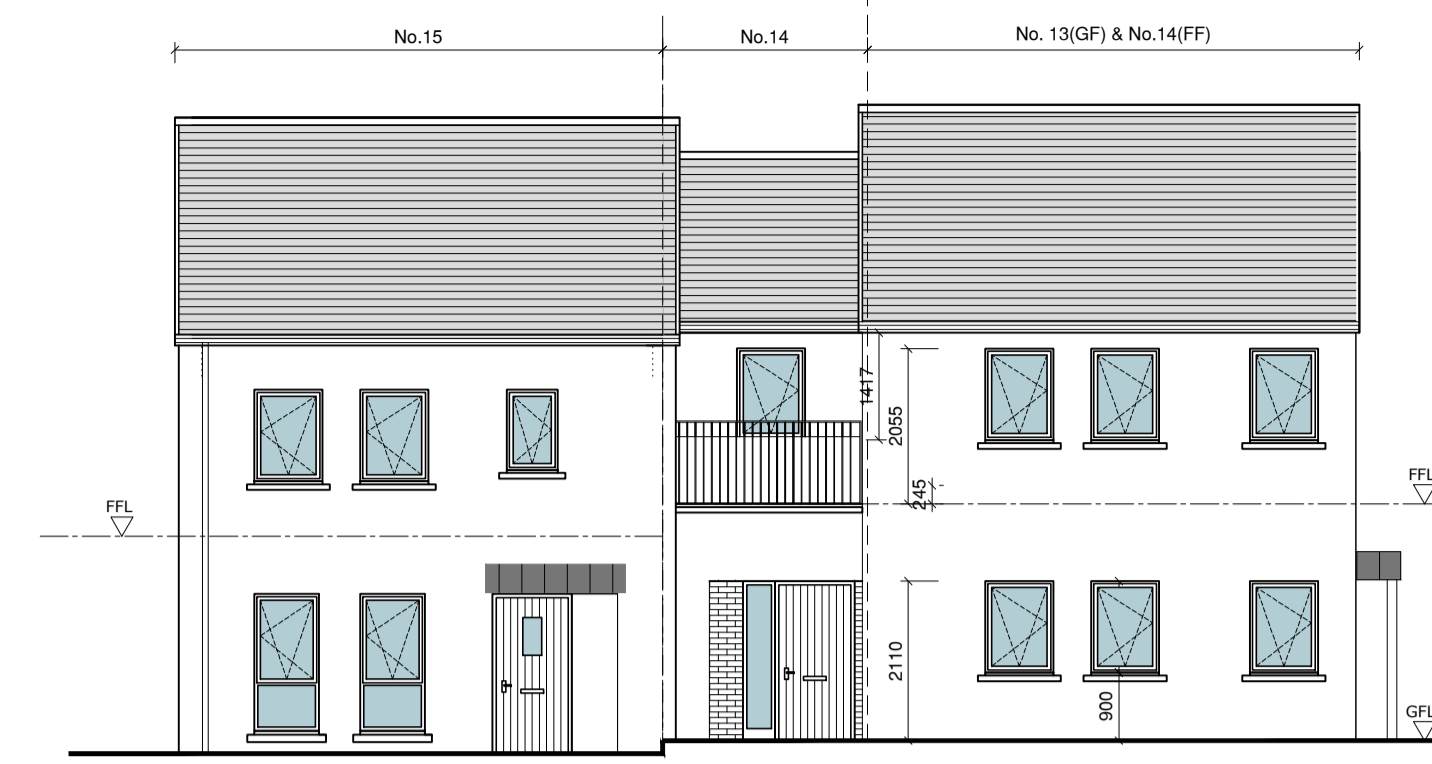




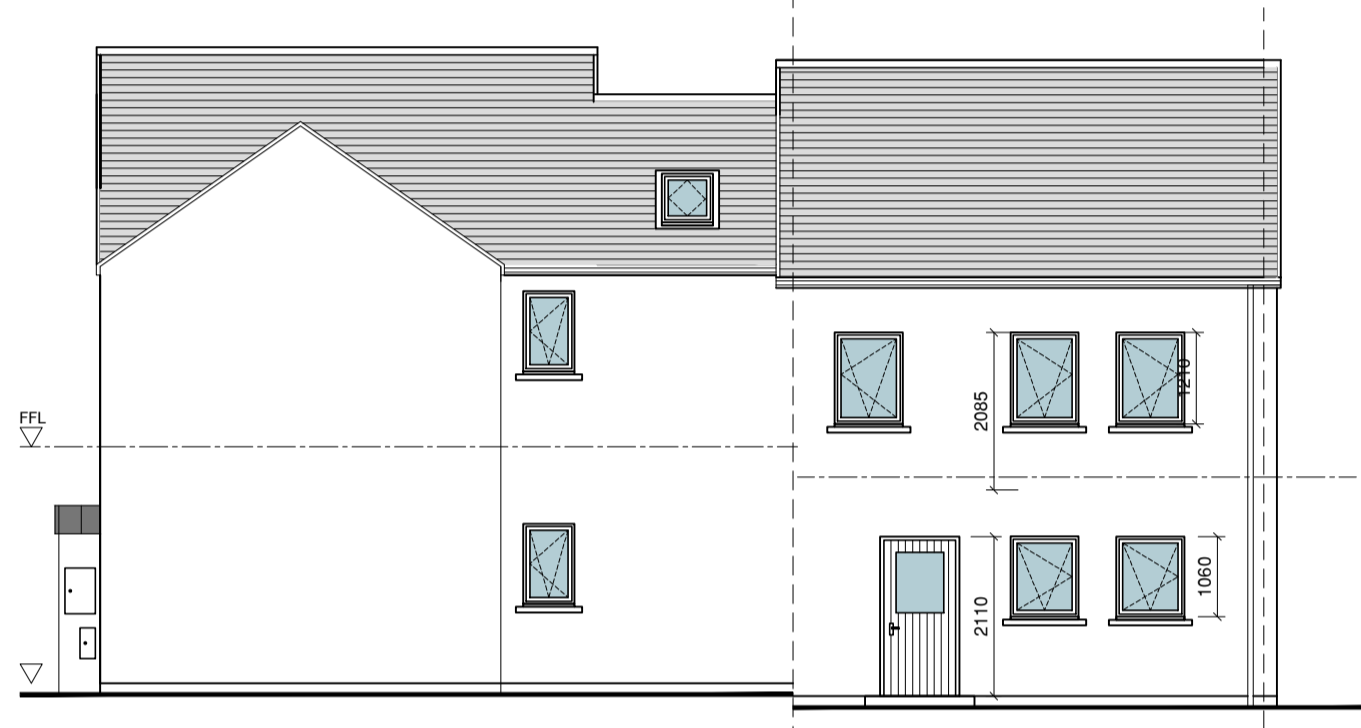
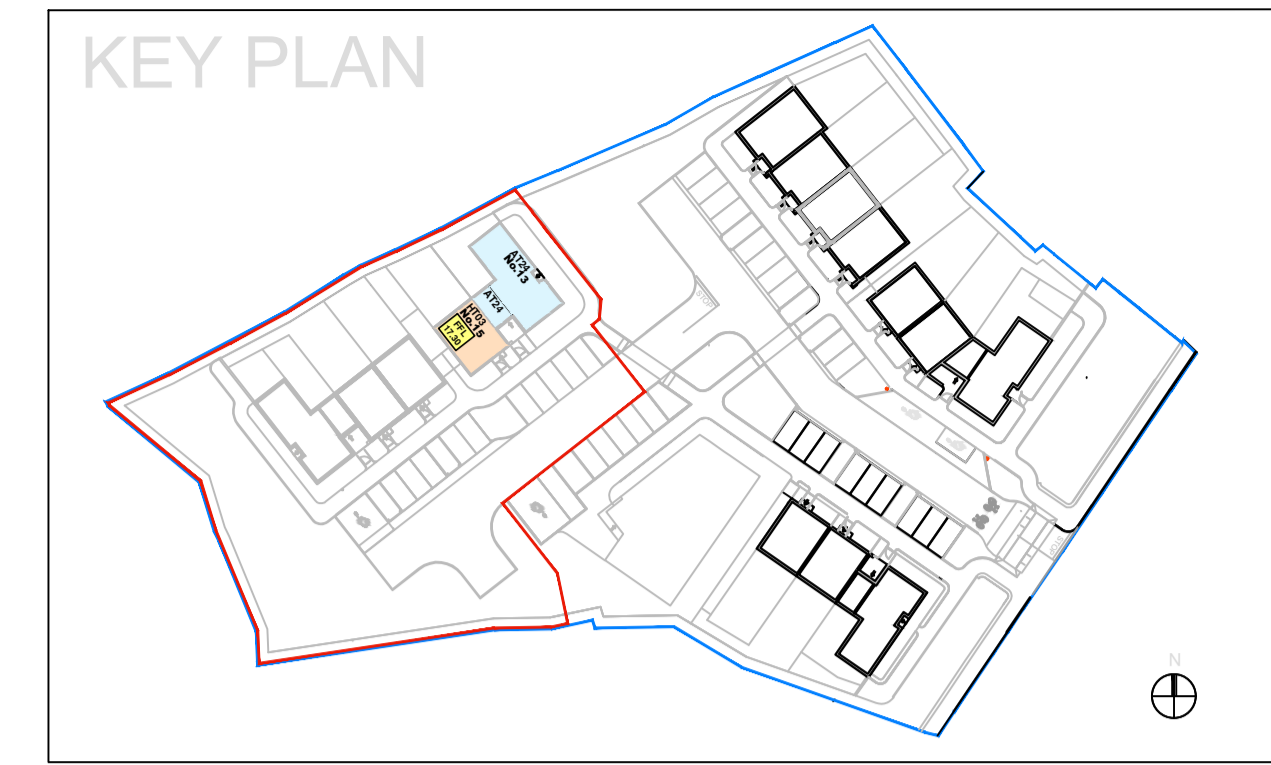
Section A-A



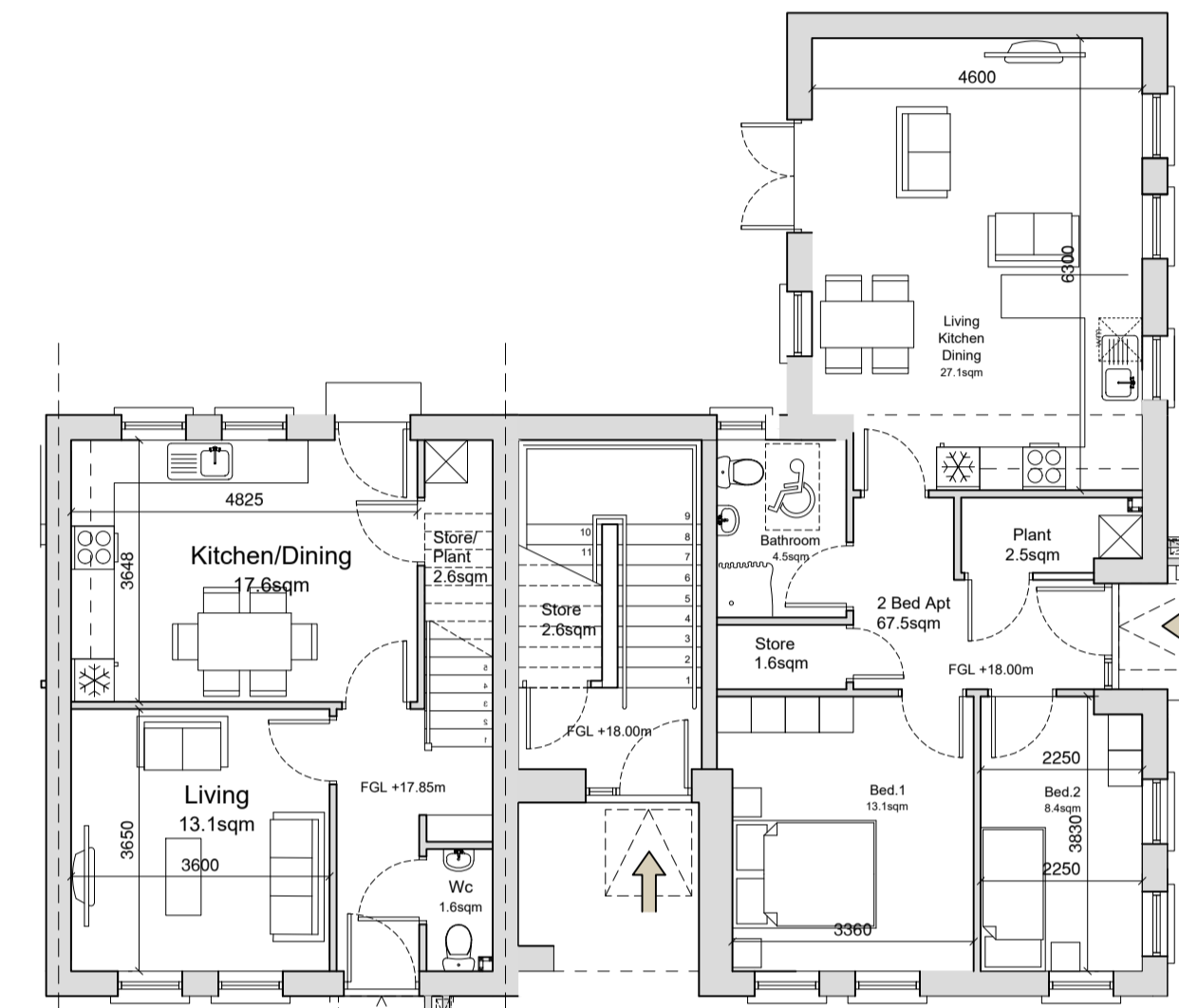
Elevation (North East)



Front Elevation (South East)



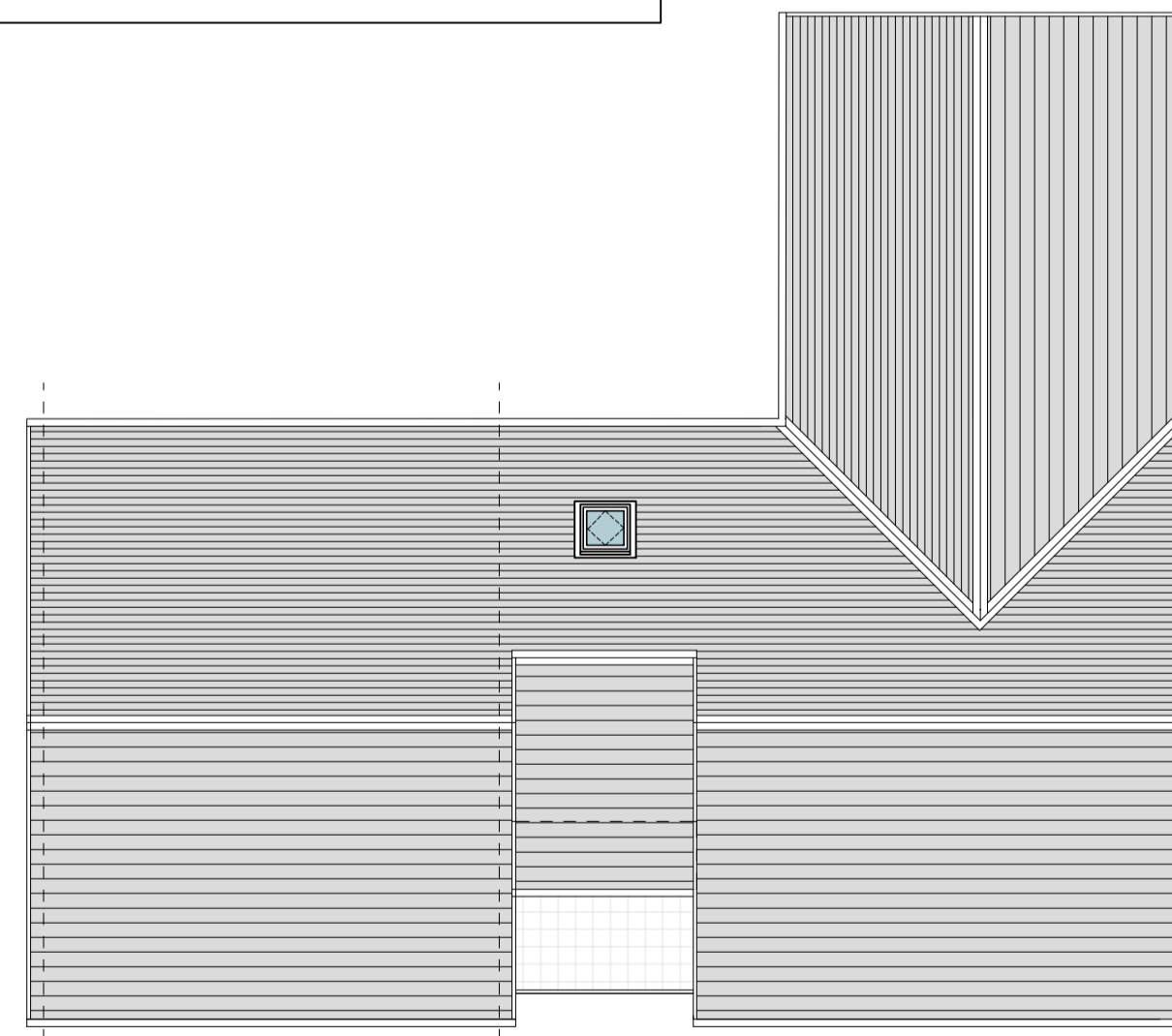
Rear Elevation (North West)



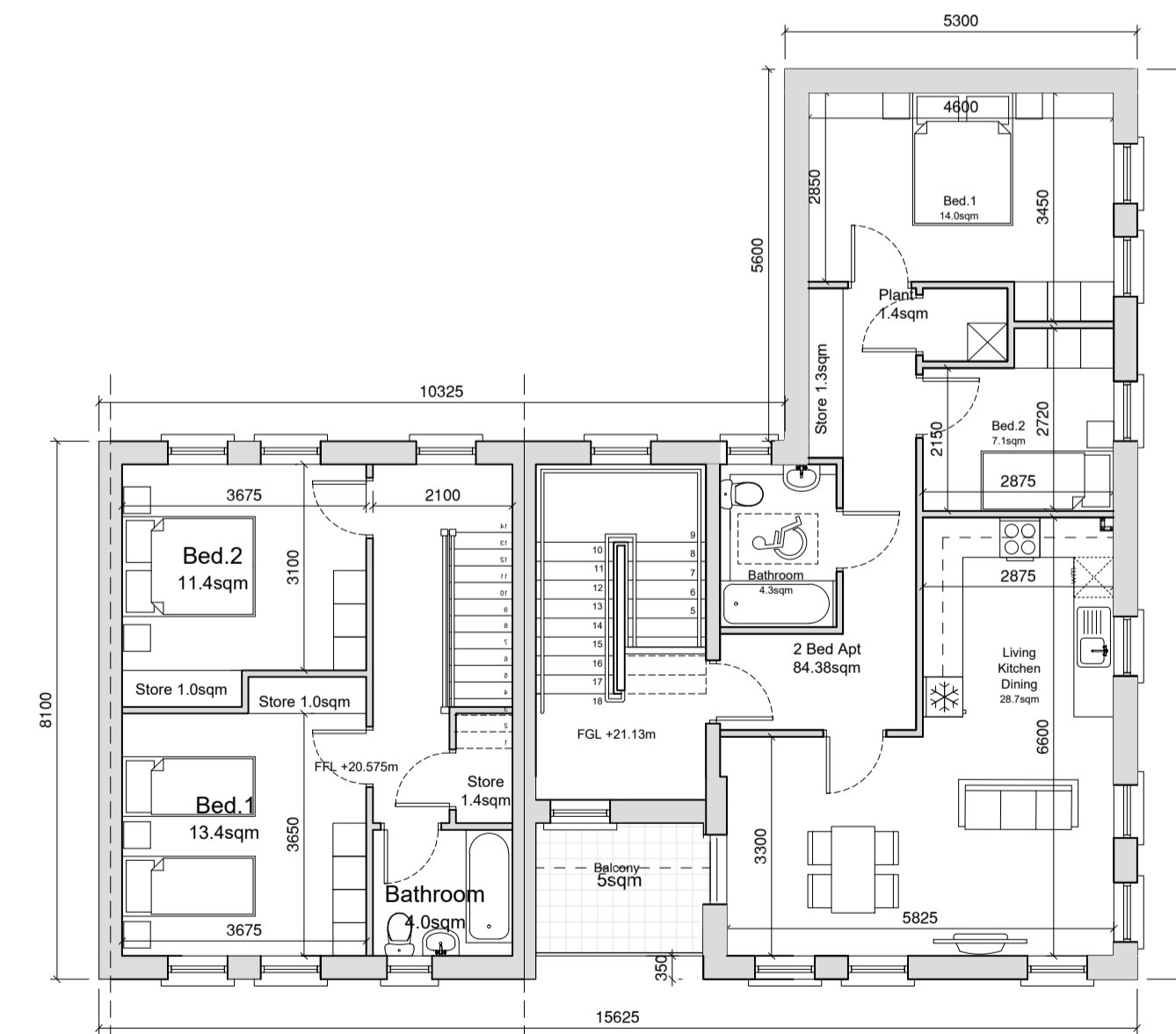
Ground Floor Plan  
Area: 87sqm  
Total Area: 87sqm

Ground Floor Plan  
Area: 80.1sqm  
Total Area: 162.8sqm

External Finishes Schedule	
Roof:	Blue/Black Fibre cement Slate
Walls:	White External Render - Smooth/dashed Brick detail at Entrances
Windows & Doors:	Grey AluClad
Rain Water Goods:	Black uPVC



Roof Plan



First Floor Plan  
Area: 74.2sqm

### House Type 3

Quality Housing for Sustainable Communities Standards

2 Bedroom / 4 Person House (2 Storey) Areas:					
	Target Gross Floor Areas (m <sup>2</sup> )	Min-Main Living Room (m <sup>2</sup> )	Aggregate Living Area (m <sup>2</sup> )	Aggregate Bedroom Area (m <sup>2</sup> )	Storage (m <sup>2</sup> )
Required	80 sqm	13 sqm	30sqm	25 sqm	4 sqm
Provided	87sqm	13.1 sqm	30.7sqm	24.8 sqm	6.0 sqm

3 Bedroom / 5 Person (2 Storey) Widths:

	Single Bedroom (m)	Double Bedroom (m)	Living Rm [1 Bed] (m)	Living Rm [2 Bed] (m)	Living Rm [3 Bed] (m)
Required	2.1m	2.8m	3.3m	3.6m	3.8m
Provided	-	3.1 m	-	3.6 m	-

### Apartment Type 24

Quality Housing for Sustainable Communities Standards

2 Bedroom / 3 Person (apt) Areas:				
	Target Gross Floor Areas (m <sup>2</sup> )	Aggregate Living Area (m <sup>2</sup> )	Aggregate Bedroom Area (m <sup>2</sup> )	Storage (m <sup>2</sup> )
Required	63 sqm	28sqm	20.1 sqm	5 sqm
Provided	GF 67.5sqm FF 69.33sqm*	GF 28.5sqm FF 28.7sqm	GF 21.5sqm FF 21.1sqm	GF 3.4sqm** FF 5.1sqm

2 Bedroom / 3 Person (apt) Widths:

	Single Bedroom (m)	Double Bedroom (m)	Living Rm [1 Bed] (m)	Living Rm [2 Bed] (m)	Living Rm [3 Bed] (m)
Required	2.1m	2.8m	3.3m	3.6m	3.8m
Provided	GF 2.14m FF 2.2m	GF 3.36m FF 2.9m	-	GF 4.37sqm FF 3.3sqm	-

\*Excluding Stairs  
\*\*Additional Storage in External Shed

