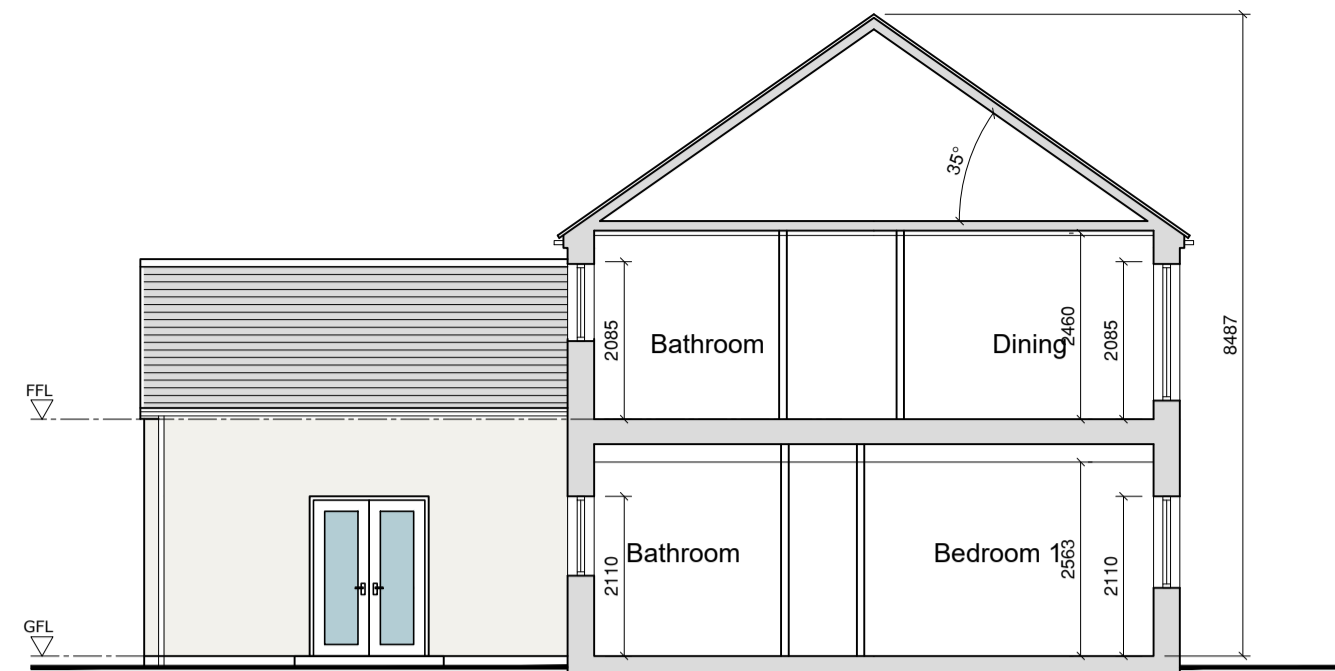
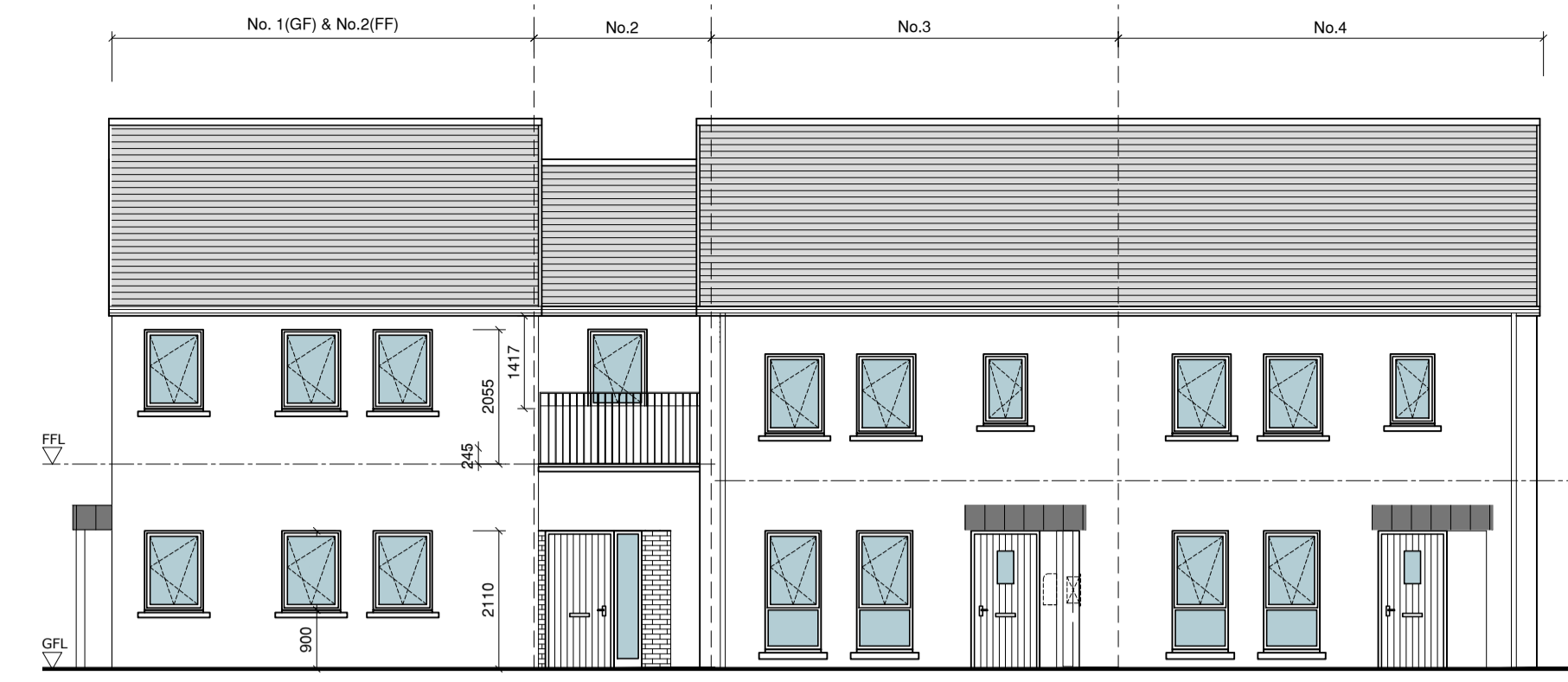


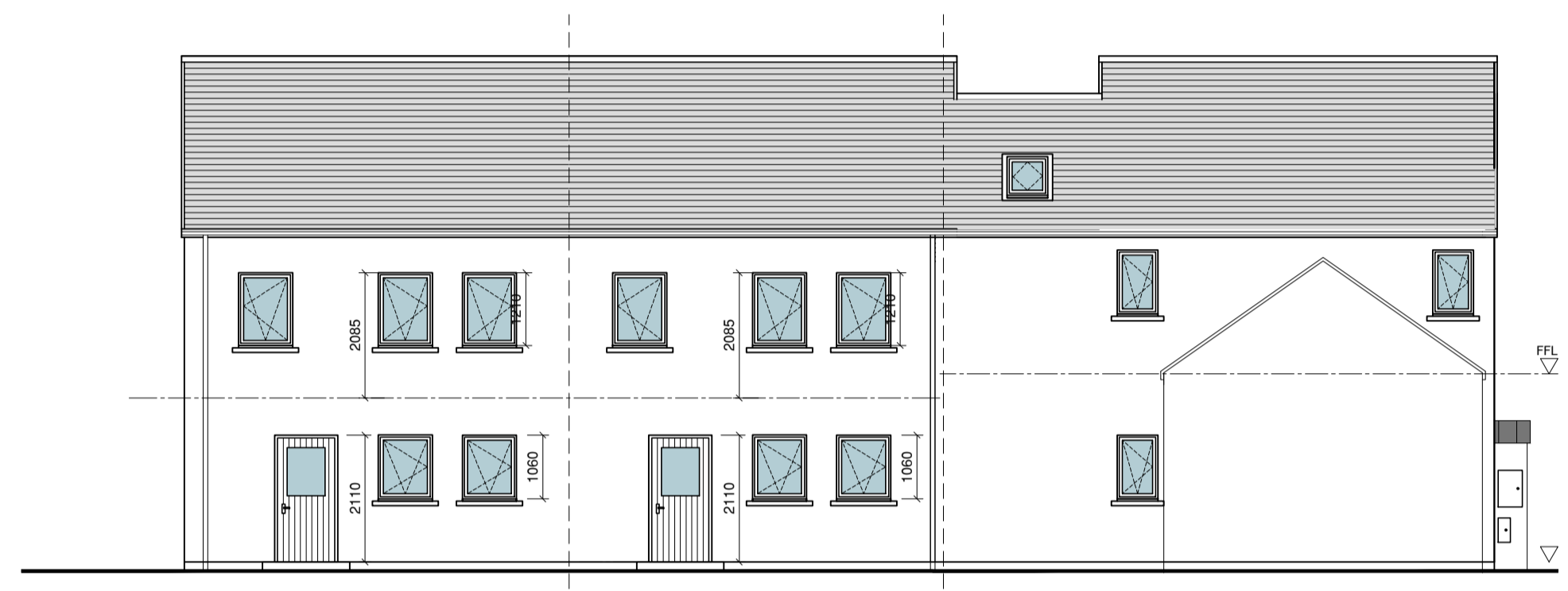
Main Road Elevation (West)



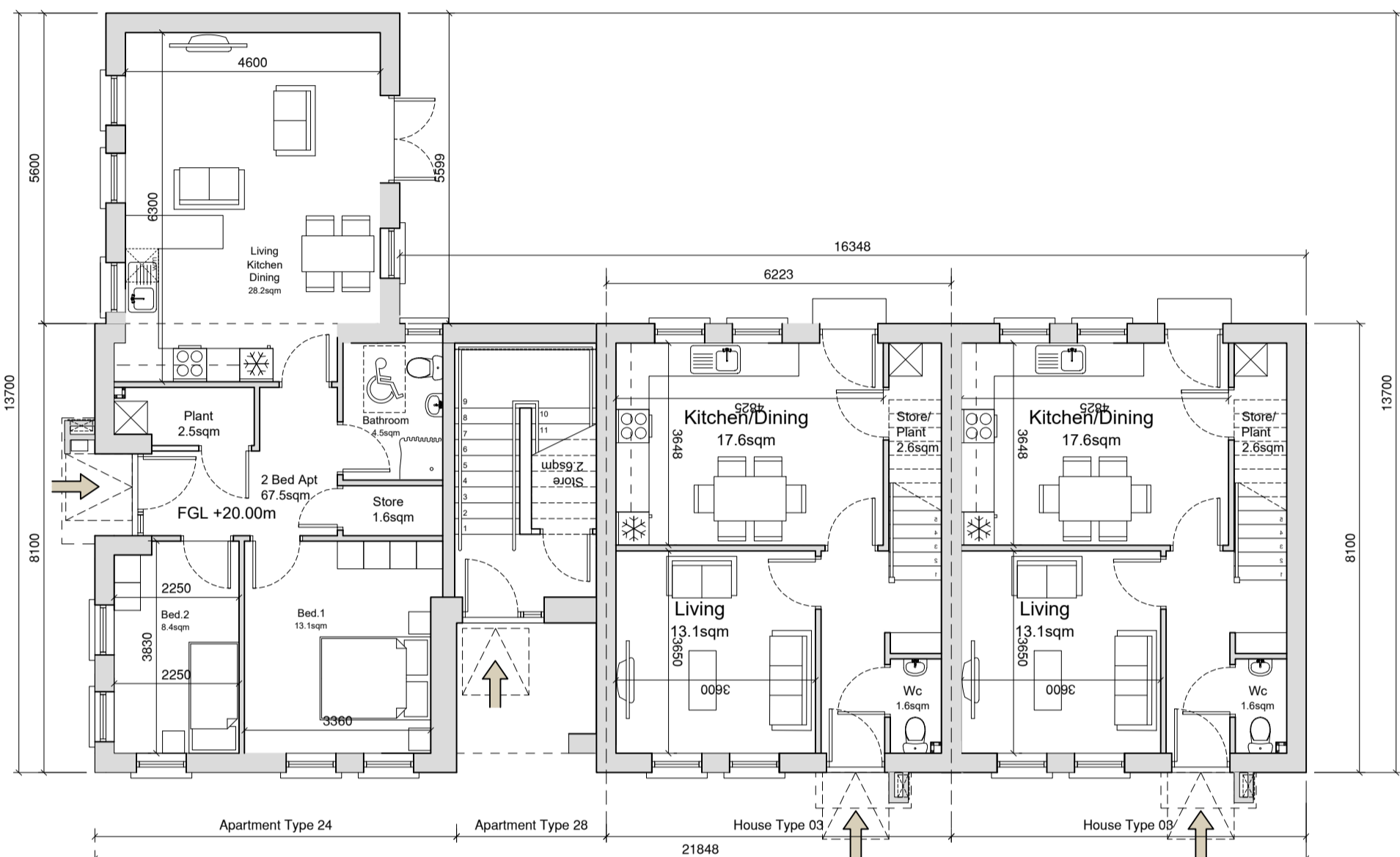
Section A-A



Front Elevation (North East)



Rear Elevation (South West)



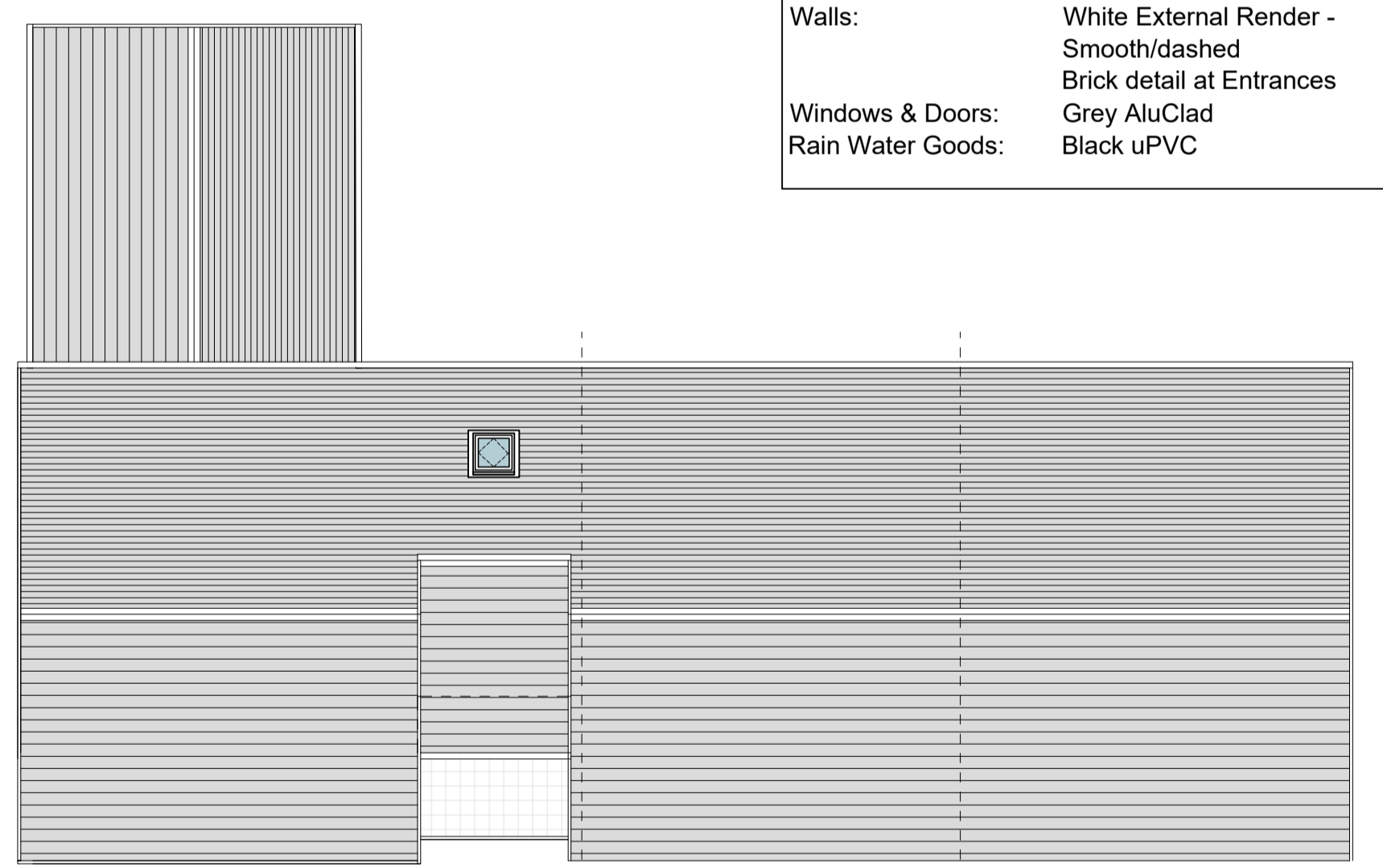
Ground Floor Plan
Area: 79.7sqm
Total Area: 162.8sqm

Ground Floor Plan
Area: 43.5sqm
Total Area: 87sqm

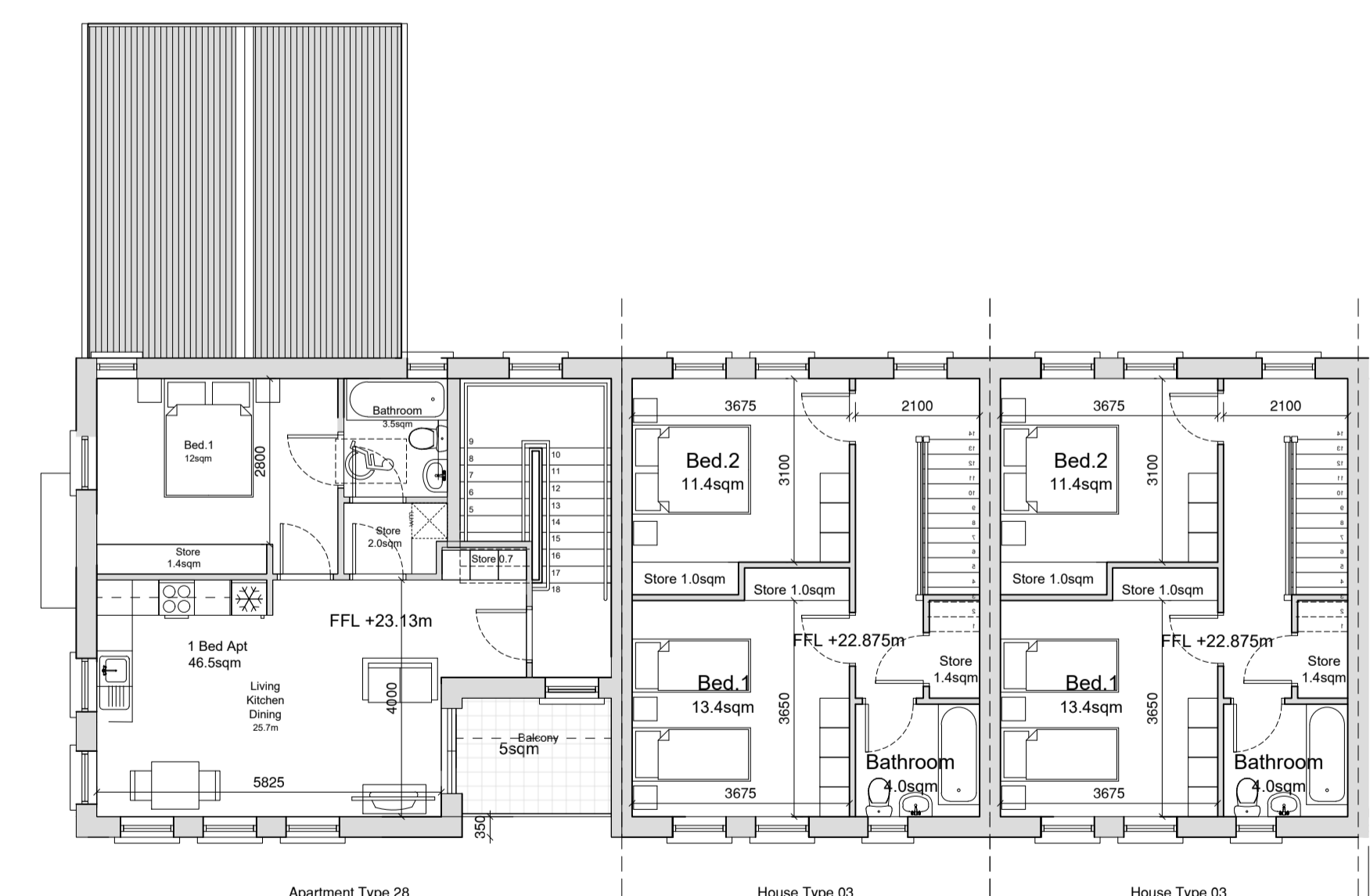
Ground Floor Plan
Area: 43.5sqm
Total Area: 87sqm

External Finishes Schedule

Roof:	Blue/Black Fibre cement Slate
Walls:	White External Render - Smooth/dashed Brick detail at Entrances
Windows & Doors:	Grey AluClad
Rain Water Goods:	Black uPVC



Roof Plan



First Floor Plan
Area: 46.5sqm

First Floor Plan
Area: 43.5sqm

First Floor Plan
Area: 43.5sqm

House Type 3

Quality Housing for Sustainable Communities Standards

2 Bedroom / 4 Person House (2 Storey) Areas:

	Target Gross Floor Areas (m ²)	Min-Main Living Room (m ²)	Aggregate Living Area (m ²)	Aggregate Bedroom Area (m ²)	Storage (m ²)
Required	80 sqm	13 sqm	30sqm	25 sqm	4 sqm
Provided	87sqm	13.1 sqm	30.7sqm	24.8 sqm	6.0 sqm

3 Bedroom / 5 Person (2 Storey) Widths:

	Single Bedroom (m)	Double Bedroom (m)	Living Rm [1 Bed] (m)	Living Rm [2 Bed] (m)	Living Rm [3 Bed] (m)
Required	2.1m	2.8m	3.3m	3.6m	3.8m
Provided	-	3.1 m	-	3.6 m	-

Apartment Type 24

Quality Housing for Sustainable Communities Standards

2 Bedroom / 3 Person (apt) Areas:

	Target Gross Floor Areas (m ²)	Aggregate Living Area (m ²)	Aggregate Bedroom Area (m ²)	Storage (m ²)
Required	63 sqm	28sqm	20.1 sqm	5 sqm
Provided	GF 67.5sqm	GF 28.5sqm	GF 21.5sqm	GF 3.4sqm**

2 Bedroom / 3 Person (apt) Widths:

	Single Bedroom (m)	Double Bedroom (m)	Living Rm [1 Bed] (m)	Living Rm [2 Bed] (m)	Living Rm [3 Bed] (m)
Required	2.1m	2.8m	3.3m	3.6m	3.8m
Provided	GF 2.14m	GF 3.36m	-	GF 4.37sqm	-

*Excluding Stairs
**Additional Storage in External Shed

Apartment Type 28

Quality Housing for Sustainable Communities Standards

1 Bedroom / 2 Person (apt) Areas:

	Target Gross Floor Areas (m ²)	Aggregate Living Area (m ²)	Aggregate Bedroom Area (m ²)	Storage (m ²)
Required	45 sqm	23sqm	11.4 sqm	3 sqm
Provided	FF 46.5sqm*	FF 25.7sqm	FF 12.0sqm	FF 4.1sqm

1 Bedroom / 2 Person (apt) Widths:

	Single Bedroom (m)	Double Bedroom (m)	Living Rm [1 Bed] (m)	Living Rm [2 Bed] (m)	Living Rm [3 Bed] (m)
Required	2.1m	2.8m	3.3m	3.6m	3.8m
Provided	-	FF 2.8m	FF 4.0m	-	-

*Excluding Stairs
**Additional Storage in External Shed

