

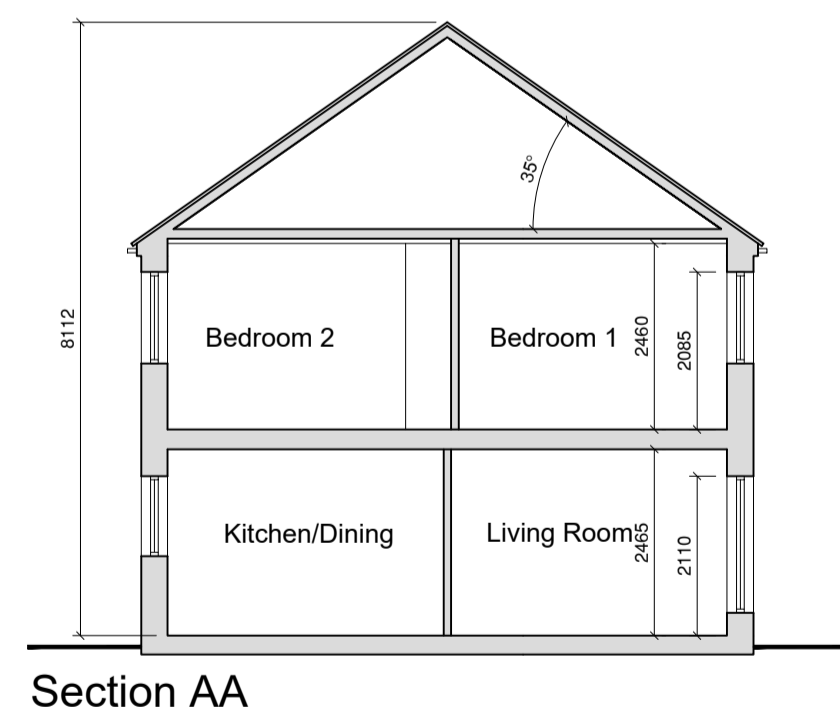
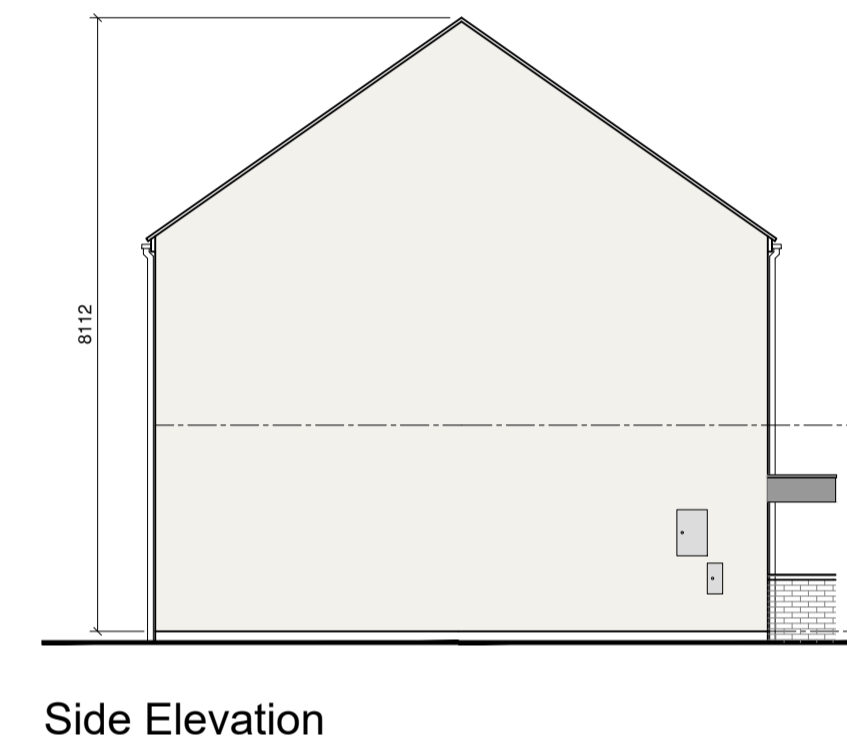
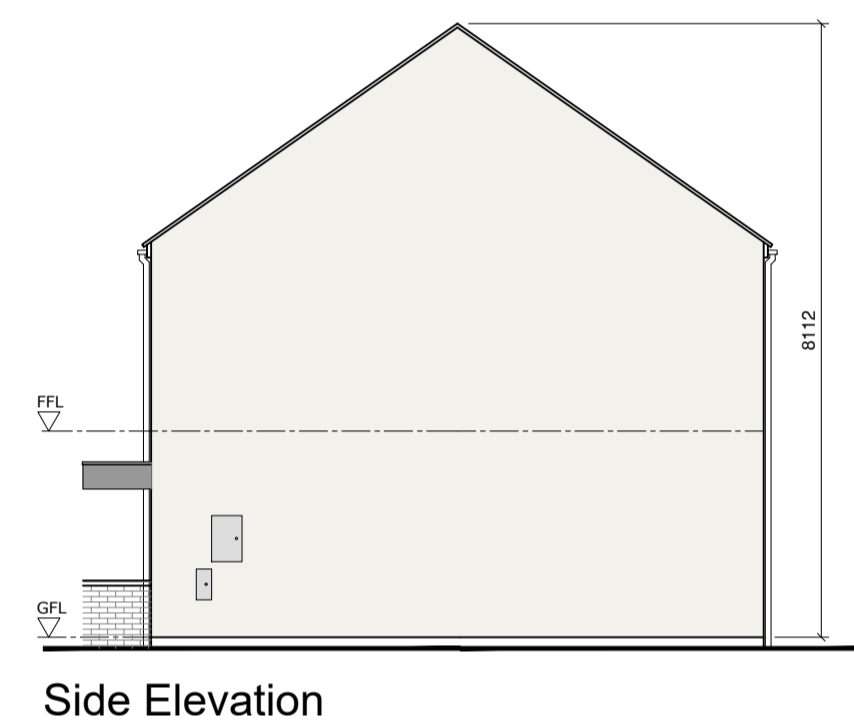
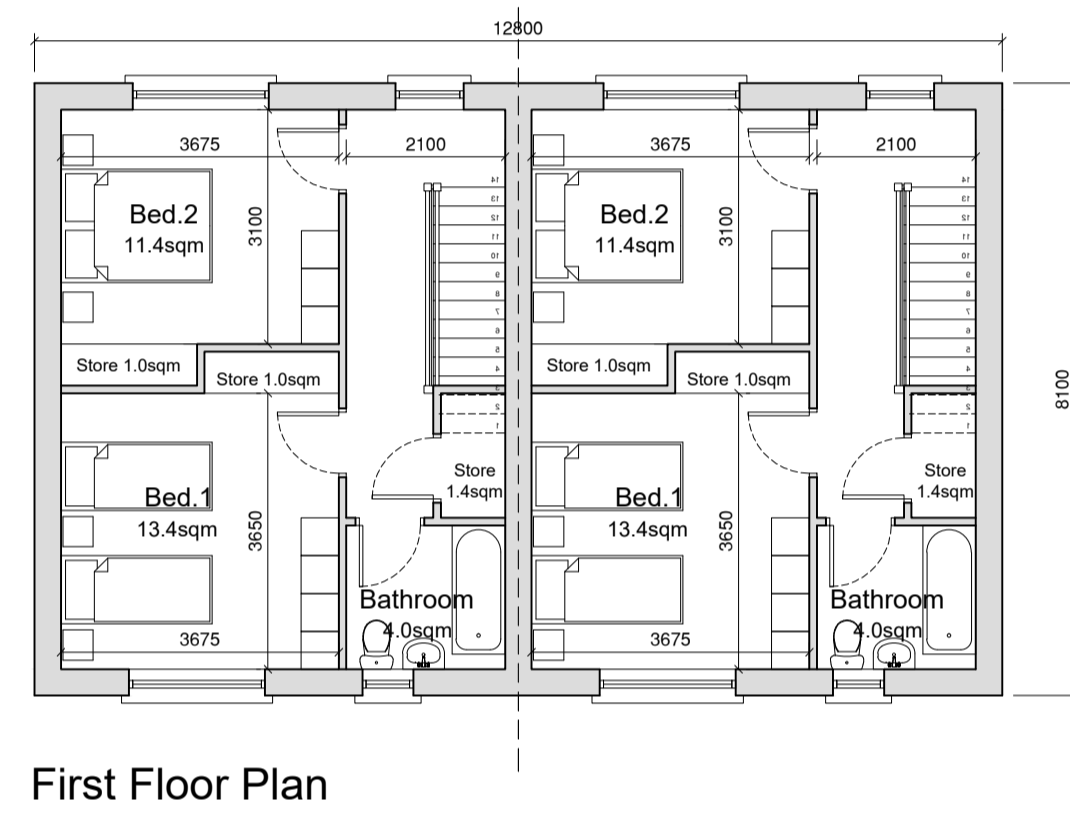
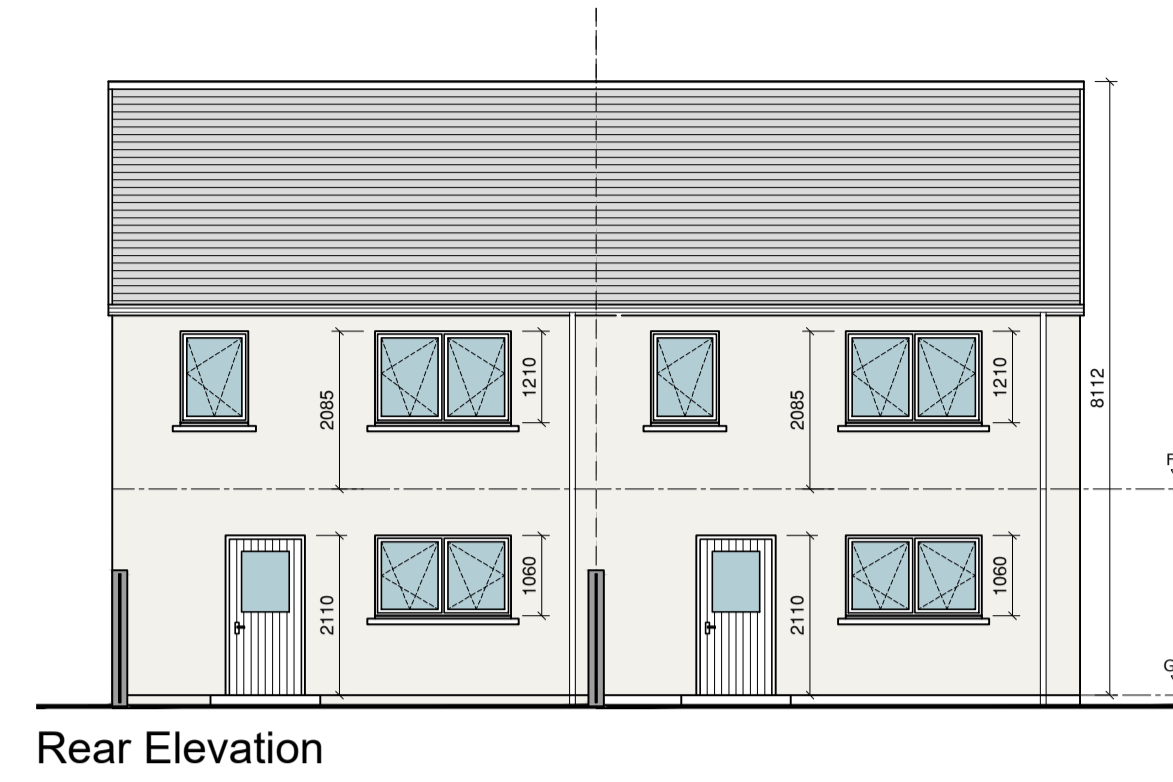
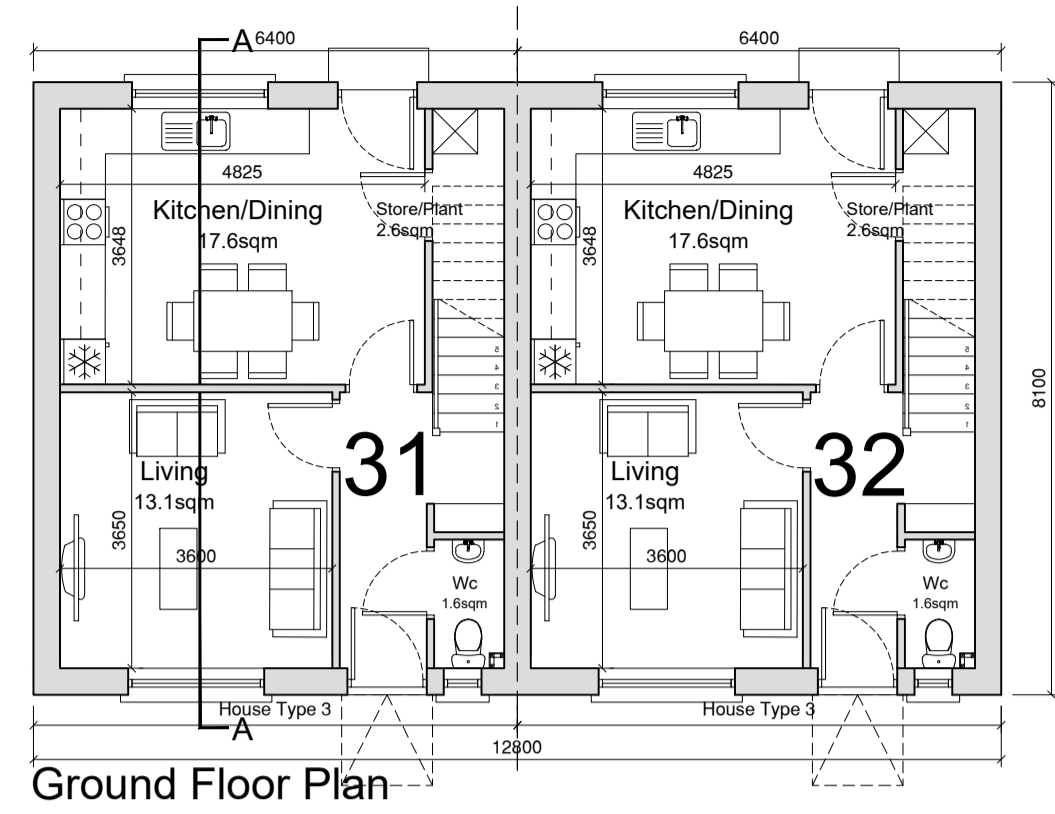
# House Type 3

Quality Housing for Sustainable Communities Standards

2 Bedroom / 4 Person House (2 Storey) Areas:					
	Target Gross Floor Areas (m <sup>2</sup> )	Min-Main Living Room (m <sup>2</sup> )	Aggregate Living Area (m <sup>2</sup> )	Aggregate Bedroom Area (m <sup>2</sup> )	Storage (m <sup>2</sup> )
Required	80 sqm	13 sqm	30sqm	25 sqm	4 sqm
Provided	87sqm	13.1 sqm	30.7sqm	24.8 sqm	6.0 sqm

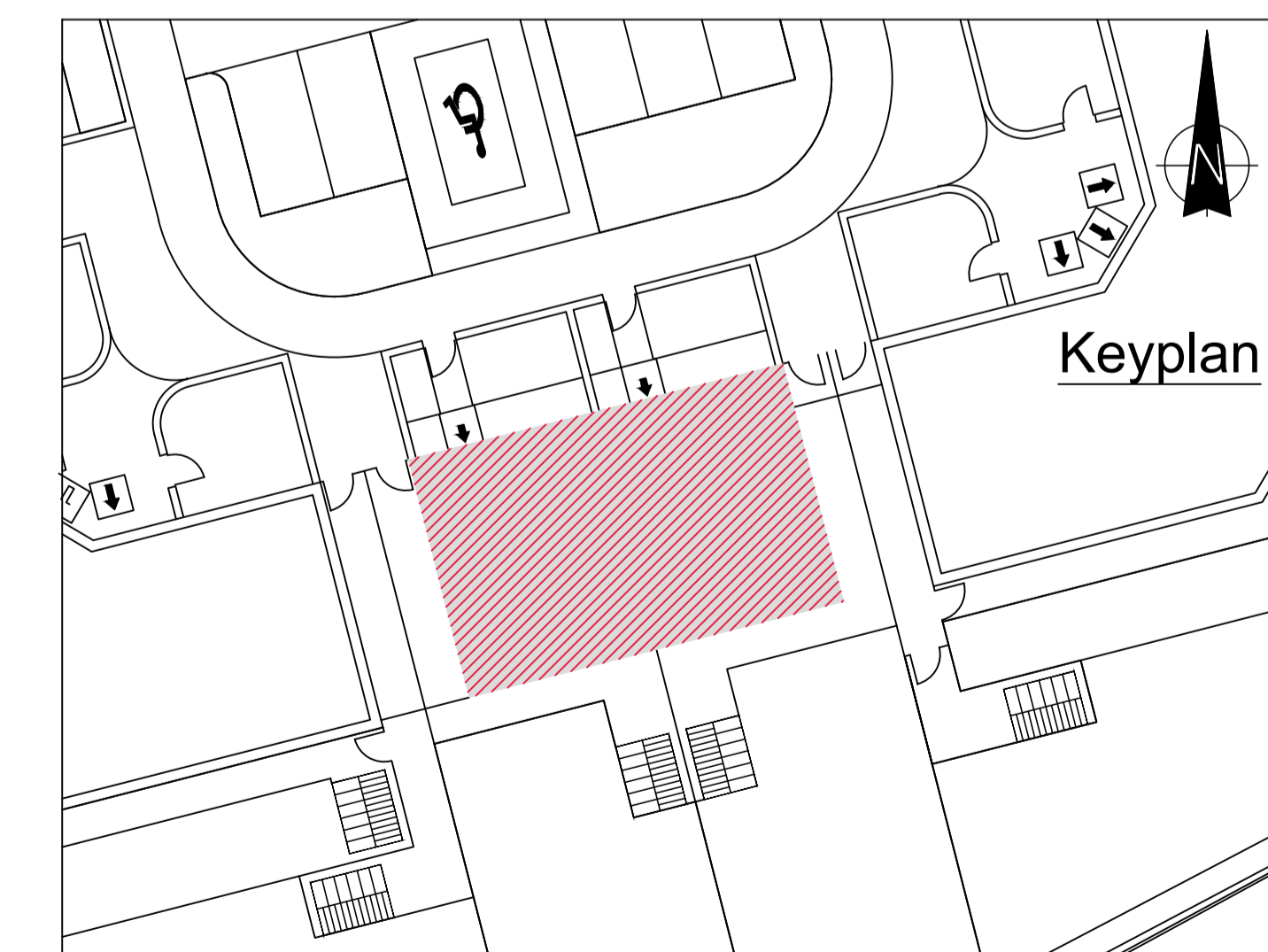
  

3 Bedroom / 5 Person (2 Storey) Widths:					
	Single Bedroom (m)	Double Bedroom (m)	Living Rm [1 Bed] (m)	Living Rm [2 Bed] (m)	Living Rm [3 Bed] (m)
Required	2.1m	2.8m	3.3m	3.6m	3.8m
Provided	-	3.1 m	-	3.6 m	-



### External Finishes Schedule

Roof:	Blue/Black Fibre cement Slate
Walls:	Dashed White External Render to houses 900mm low level dark grey Engineered Brick walls at entrances with concrete coping
Windows & Doors:	Grey AluClad
Rain Water Goods:	Black uPVC
Canopy :	Powder Coated Aluminium



REVISION	DATE	DESCRIPTION	BY
-	-	-	-
-	-	-	-
-	-	-	-
-	-	-	-
-	-	-	-
-	-	-	-
-	-	-	-