

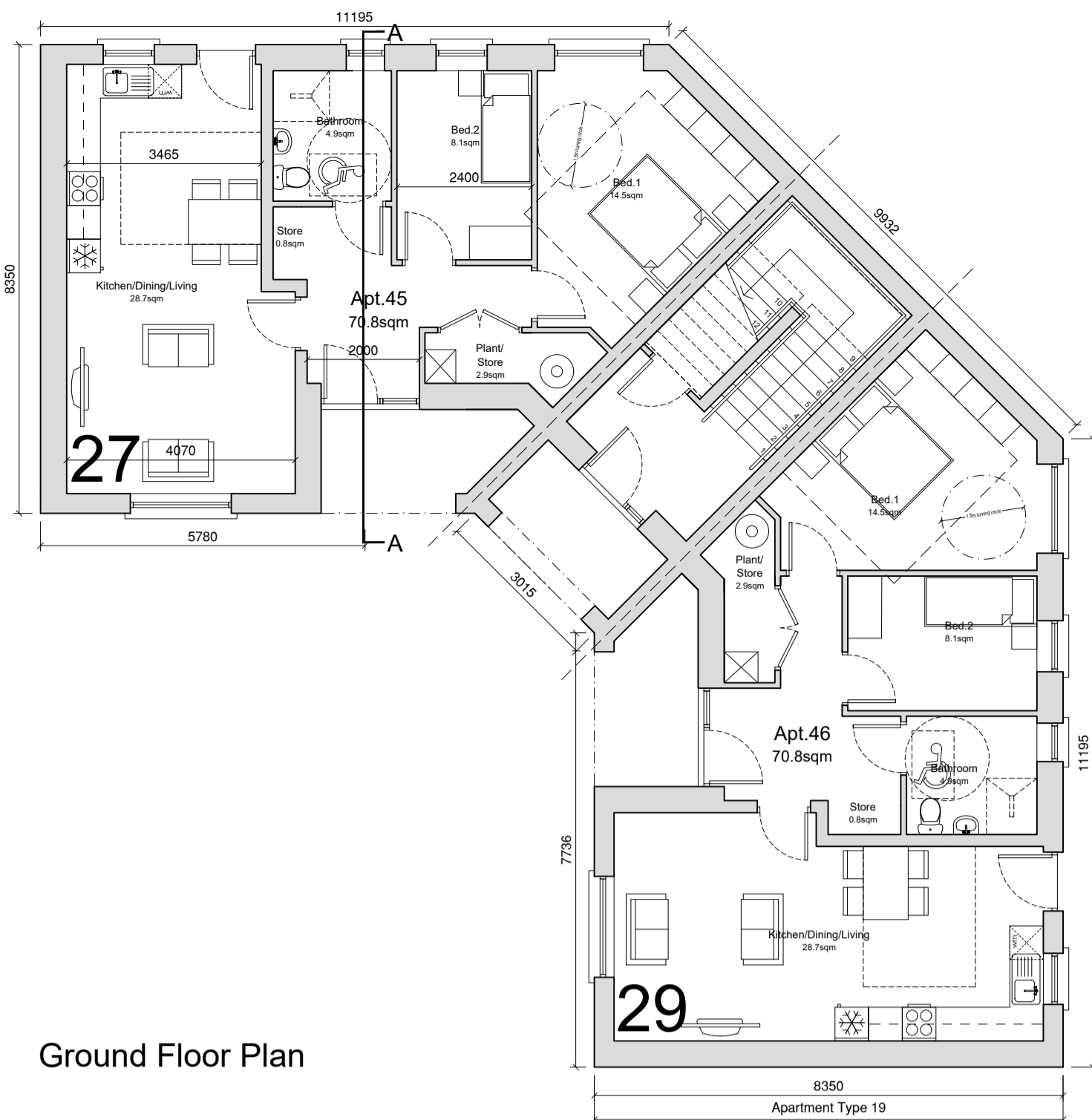
House Type 19

Quality Housing for Sustainable Communities Standards

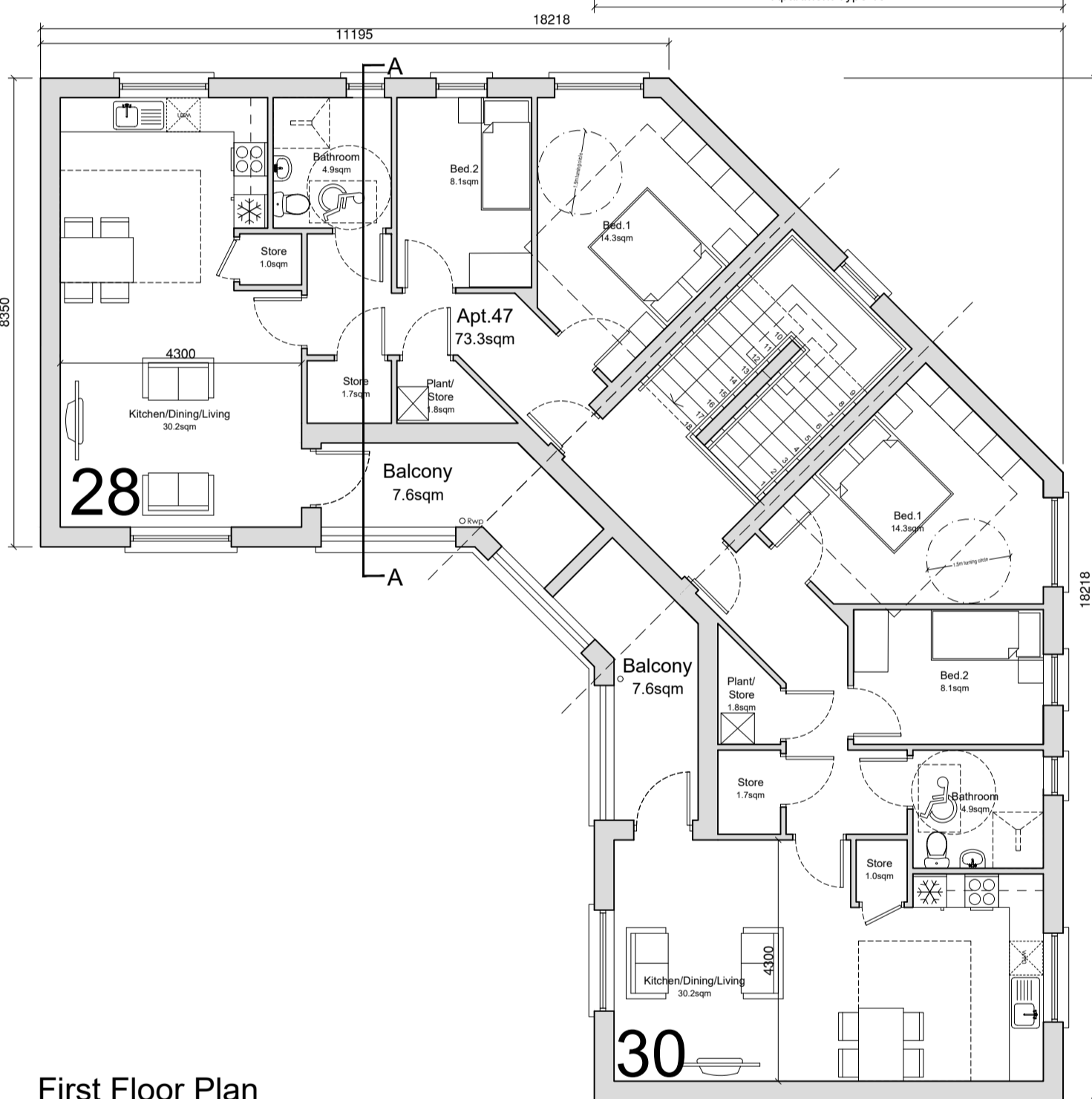
2 Bedroom / 3 Person (apt) Areas:				
	Target Gross Floor Areas (m ²)	Aggregate Living Area (m ²)	Aggregate Bedroom Area (m ²)	Storage (m ²)
Required	63 sqm	28sqm	20.1 sqm	5 sqm
Provided	GF 67.3sqm FF 68.4sqm*	GF 29.0sqm FF 29.4sqm	GF 20.5sqm FF 20.6sqm	GF 3.1sqm** FF 4.1sqm

2 Bedroom / 3 Person (apt) Widths:					
	Single Bedroom (m)	Double Bedroom (m)	Living Rm [1 Bed] (m)	Living Rm [2 Bed] (m)	Living Rm [3 Bed] (m)
Required	2.1m	2.8m	3.3m	3.6m	3.8m
Provided	GF 2.2m FF 2.2m	GF 3.0m FF 3.5m	-	GF 4.2sqm FF 4.4sqm	-

*Excluding Stairs
**Additional Storage in External Shed



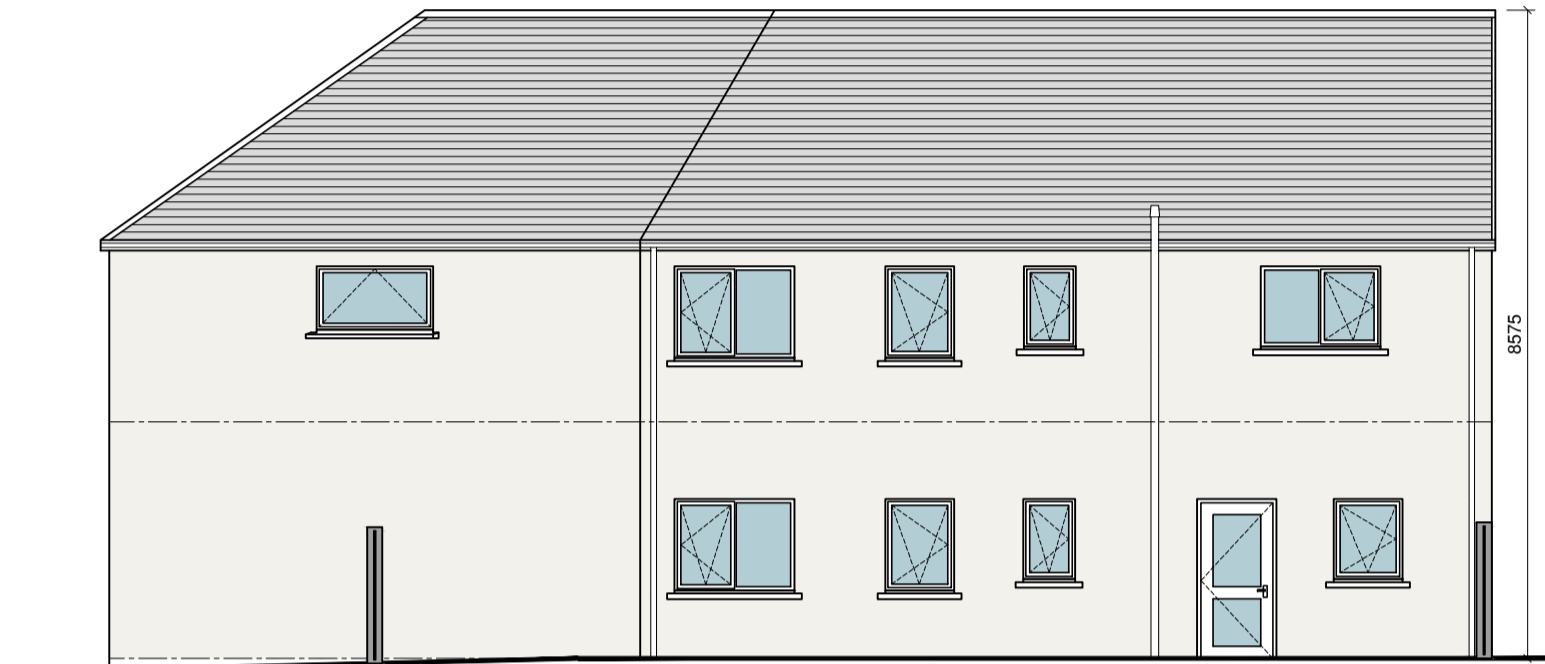
Ground Floor Plan



First Floor Plan



Front Elevation



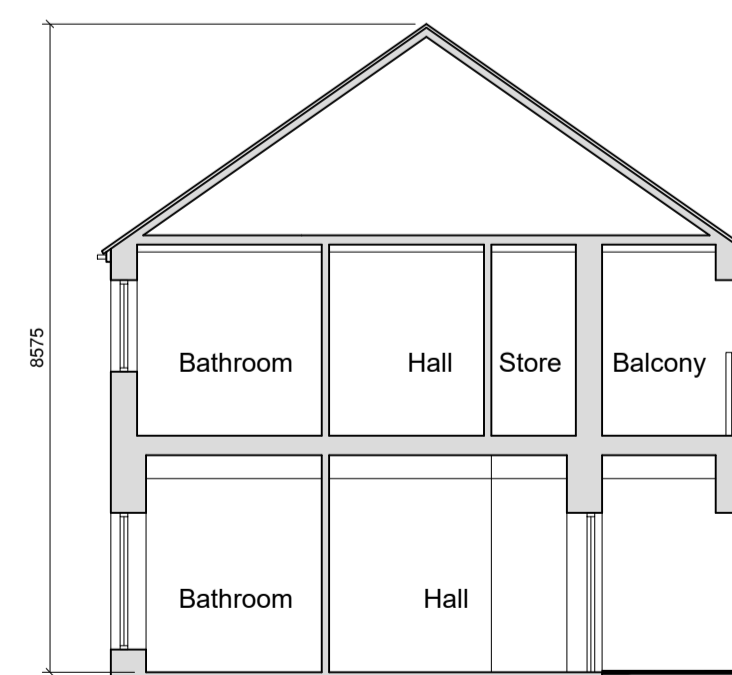
Rear Elevation



Rear Elevation



Front Elevation



Section AA

External Finishes Schedule

Roof:	Blue/Black Fibre cement Slate
Walls:	Dashed White External Render to houses 900mm low level dark grey Engineered Brick walls at entrances with concrete coping
Windows & Doors:	Grey AluClad
Rain Water Goods:	Black uPVC
Canopy :	Powder Coated Aluminium

