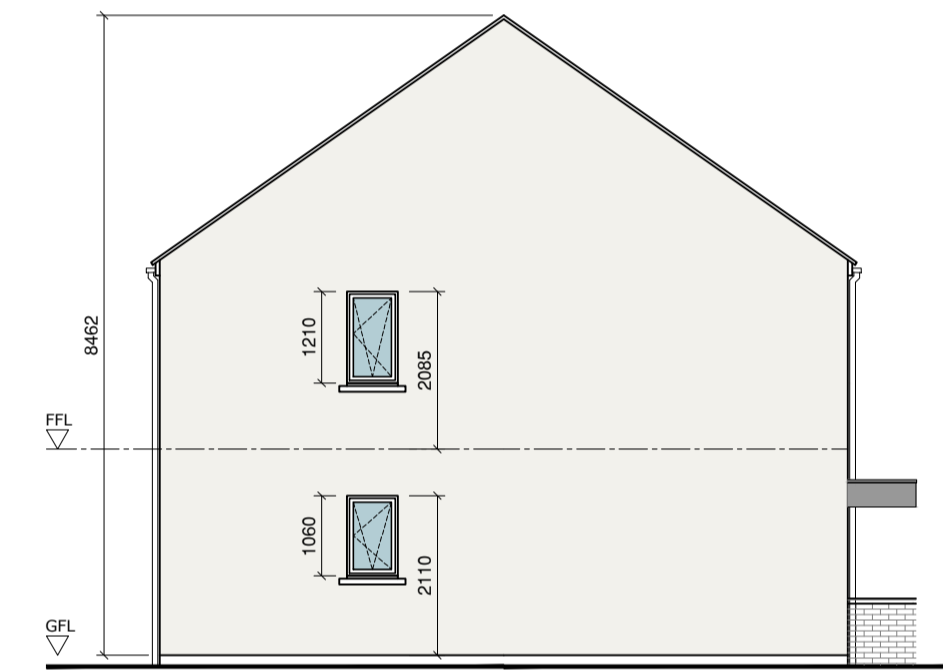
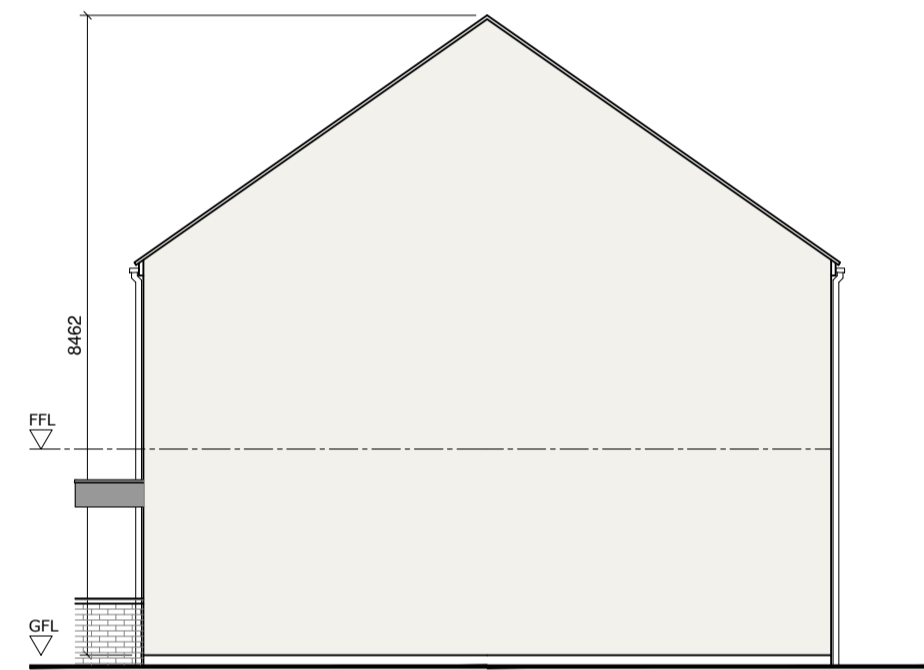
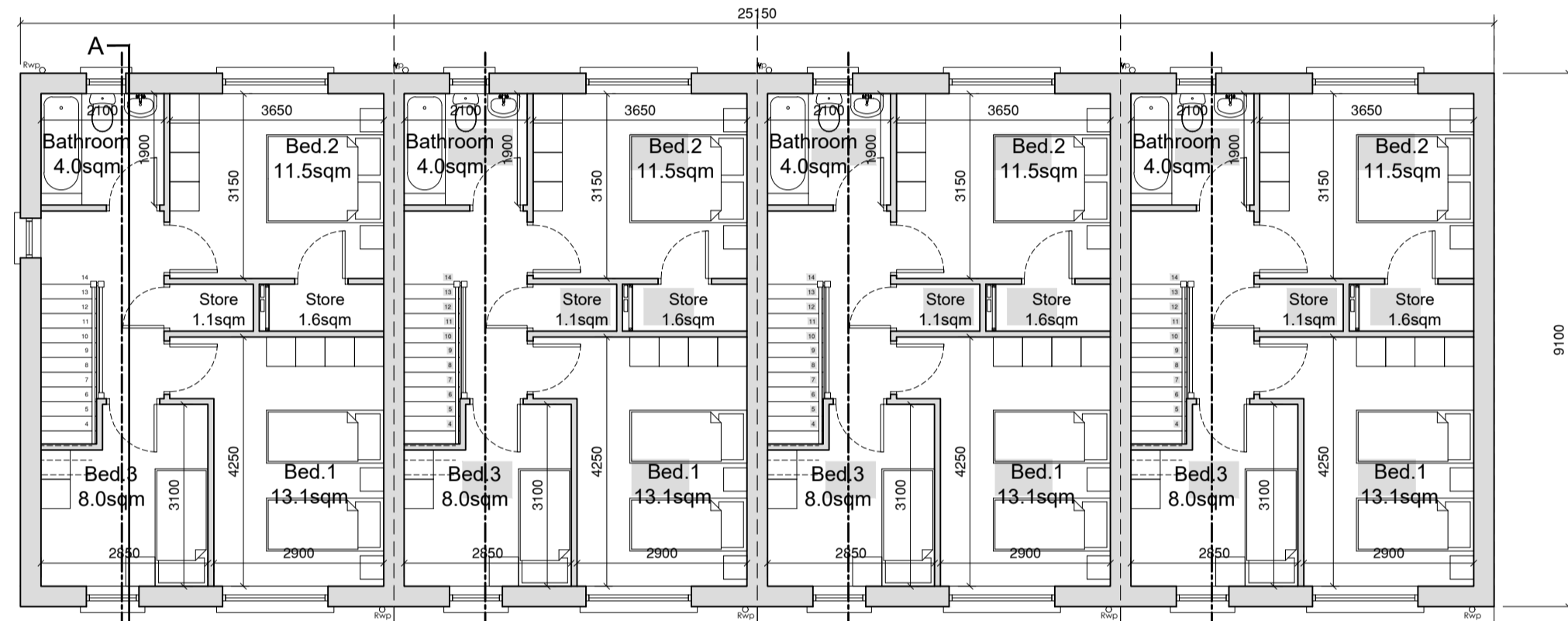
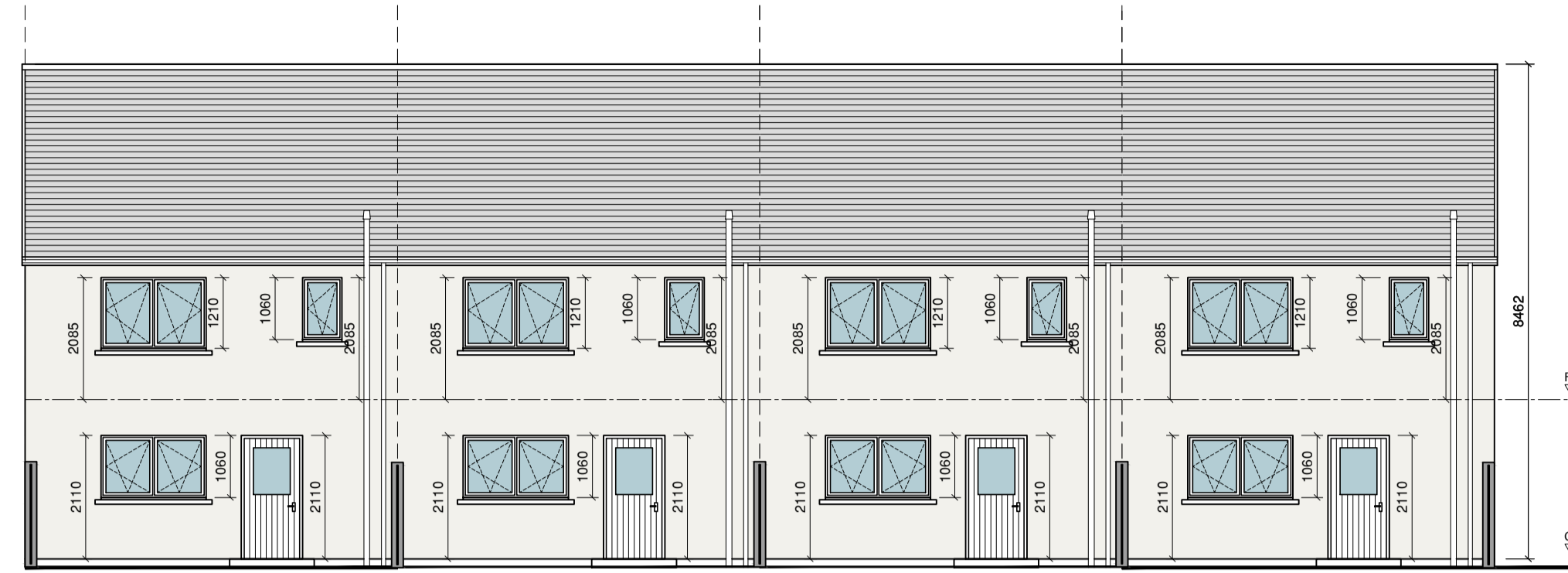
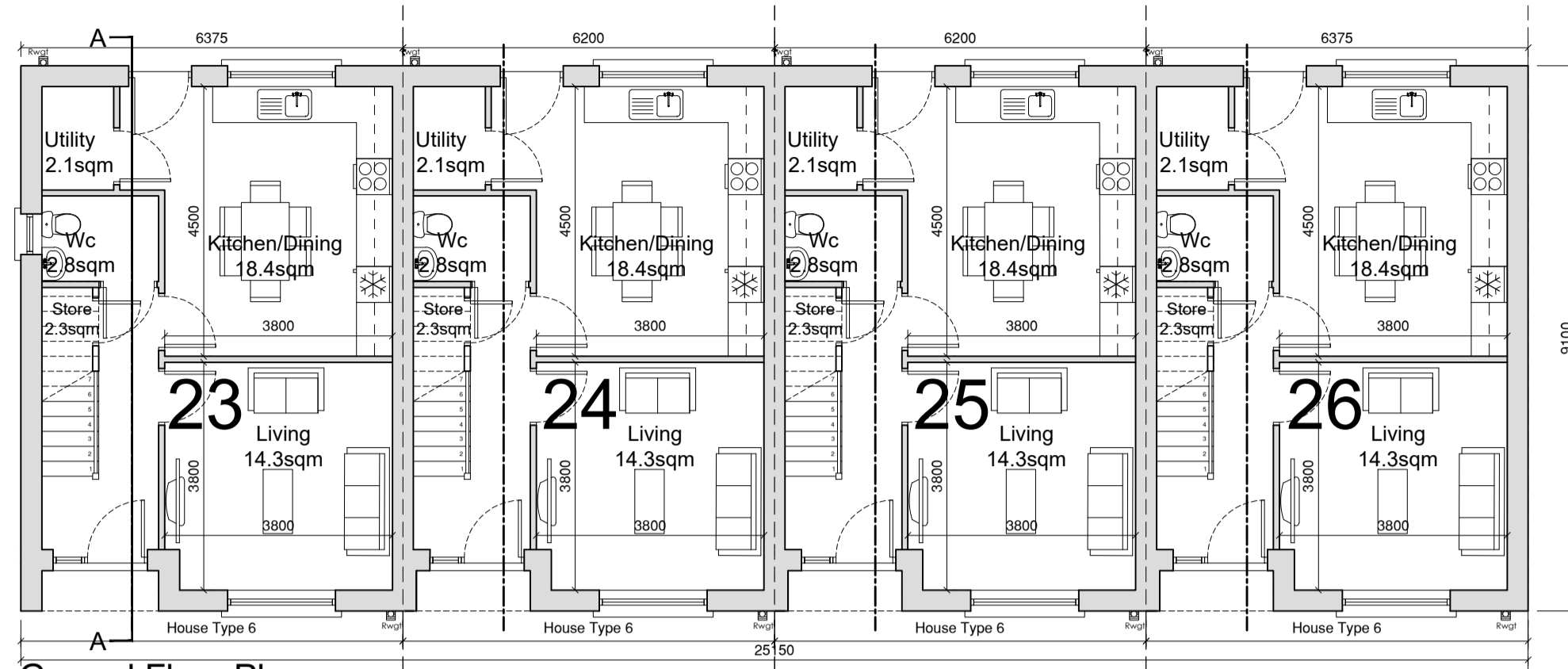


# House Type 6

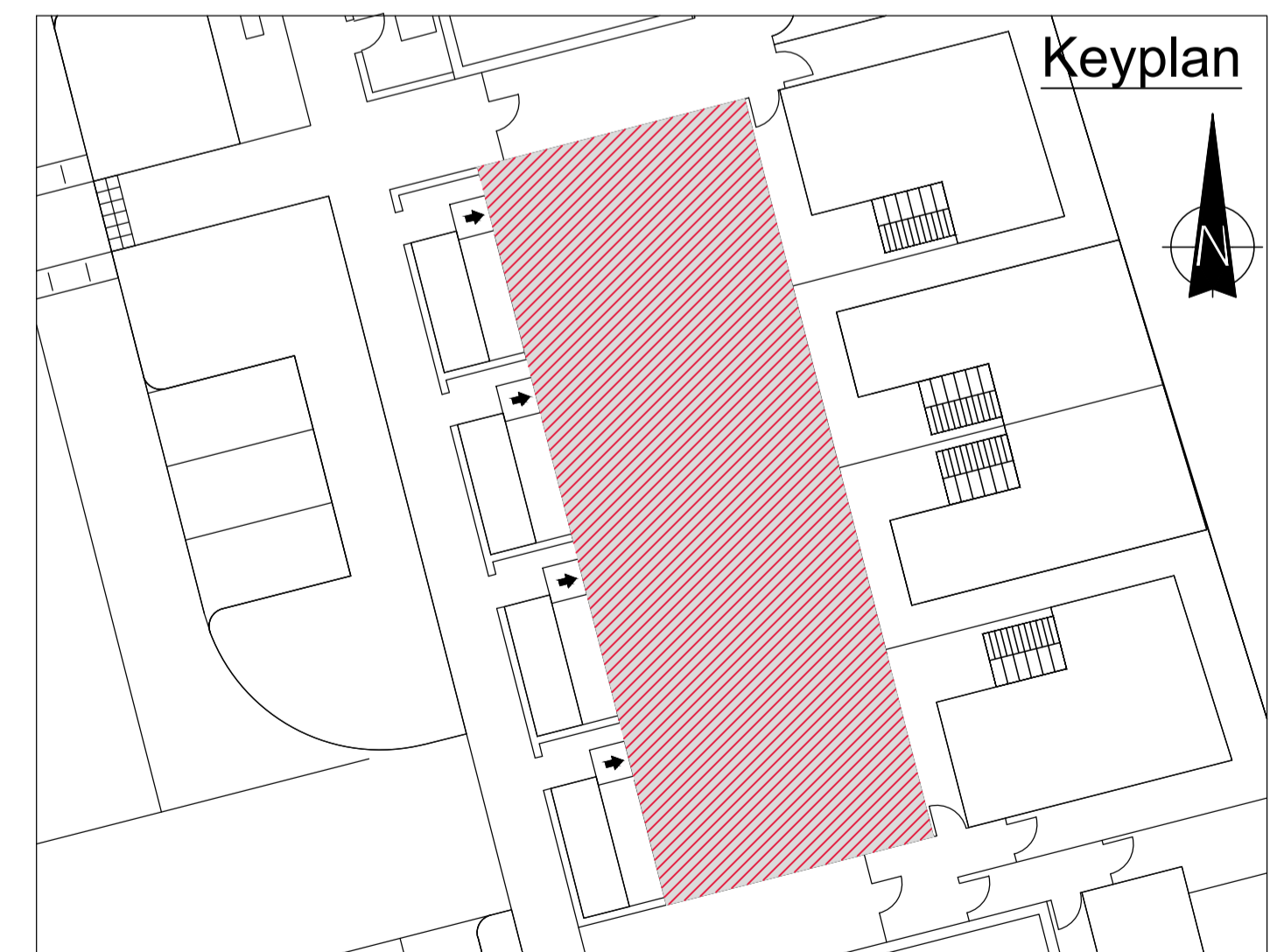
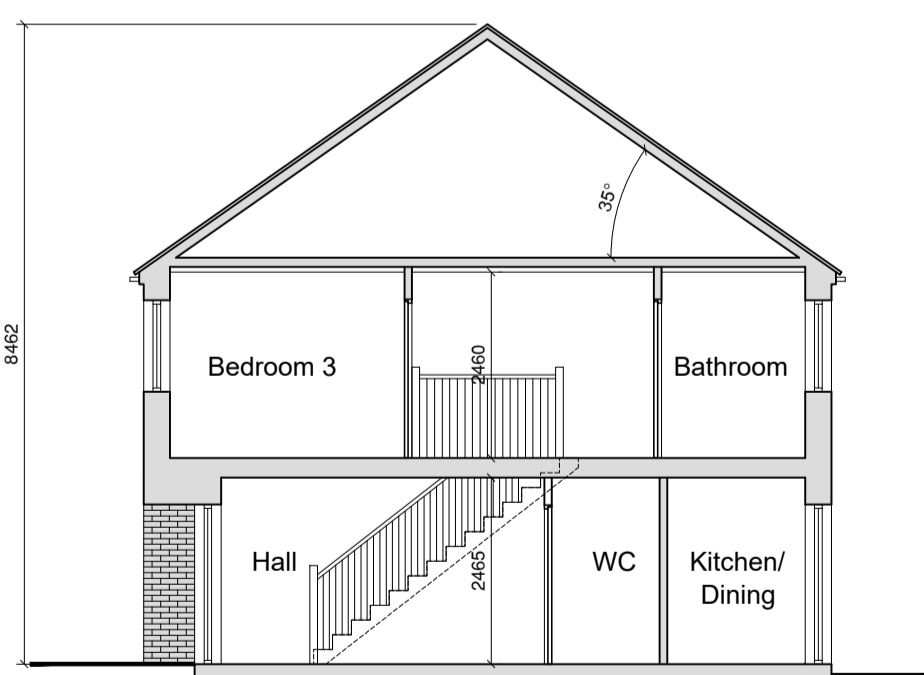
Quality Housing for Sustainable Communities Standards

3 Bedroom / 5 Person House (2 Storey) Areas:					
	Target Gross Floor Areas (m <sup>2</sup> )	Min-Main Living Room (m <sup>2</sup> )	Aggregate Living Area (m <sup>2</sup> )	Aggregate Bedroom Area (m <sup>2</sup> )	Storage (m <sup>2</sup> )
Required	92 sqm	13 sqm	34 sqm	32 sqm	5 sqm
Provided	96.73sqm	14.3 sqm	35sqm	32.6 sqm	5 sqm

3 Bedroom / 5 Person (2 Storey) Widths:					
	Single Bedroom (m)	Double Bedroom (m)	Living Rm [1 Bed] (m)	Living Rm [2 Bed] (m)	Living Rm [3 Bed] (m)
Required	2.1m	2.8m	3.3m	3.6m	3.8m
Provided	2.85 m	2.9 m	-	-	3.8 m



External Finishes Schedule	
Roof:	Blue/Black Fibre cement Slate
Walls:	Dashed White External Render to houses 900mm low level dark grey Engineered Brick walls at entrances with concrete coping
Windows & Doors:	Grey AluClad
Rain Water Goods:	Black uPVC
Canopy :	Powder Coated Aluminium



REVISION	DATE	DESCRIPTION	BY
-	-	-	-
-	-	-	-
-	-	-	-
-	-	-	-
-	-	-	-
-	-	-	-