

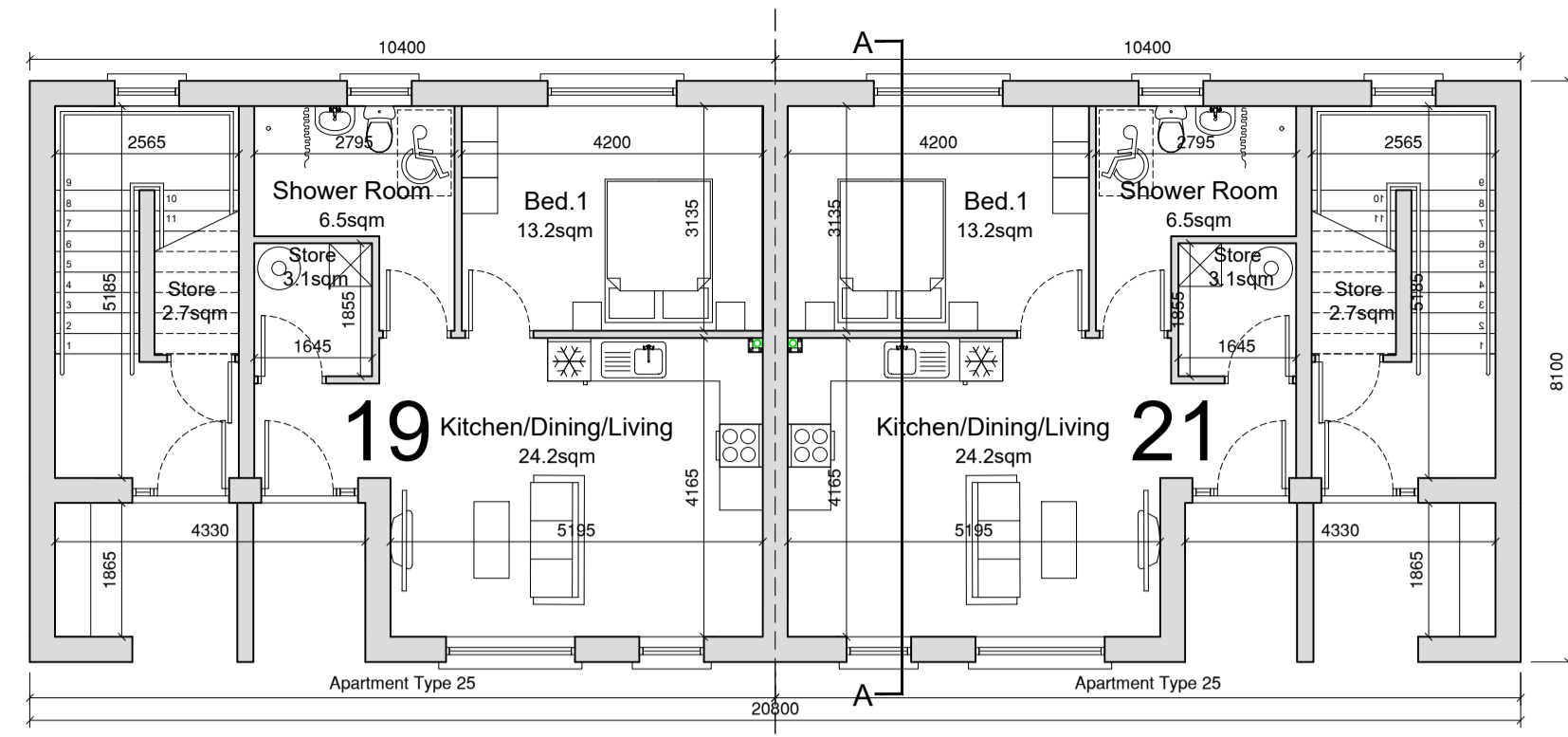
House Type 25

Quality Housing for Sustainable Communities Standards

1 Bedroom / 2 Person (apt) Areas:				
	Target Gross Floor Areas (m ²)	Aggregate Living Area (m ²)	Aggregate Bedroom Area (m ²)	Storage (m ²)
Required	45 sqm	23sqm	11.4 sqm	3 sqm
Provided	GF 48.3sqm FF 48.3sqm*	GF 24.2sqm FF 24.2sqm	GF 13.2sqm FF 13.2sqm	GF 3.1sqm FF 5.8sqm

2 Bedroom / 3 Person (apt) Widths:					
	Single Bedroom (m)	Double Bedroom (m)	Living Rm [1 Bed] (m)	Living Rm [2 Bed] (m)	Living Rm [3 Bed] (m)
Required	2.1m	2.8m	3.3m	3.6m	3.8m
Provided	-	GF 3.15sqm FF 3.15sqm	GF 4.2sqm FF 4.2sqm	-	-

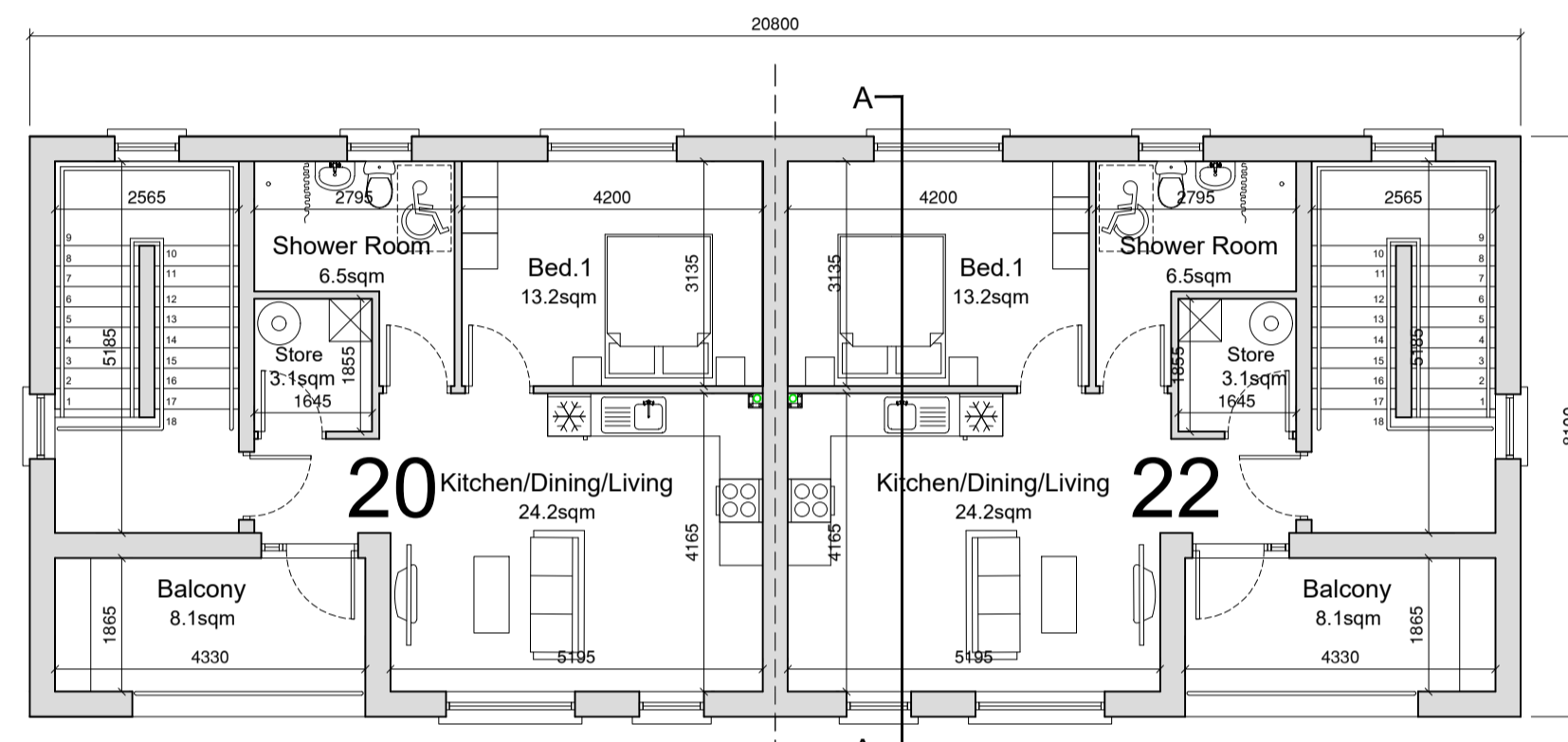
*Excluding Stairs



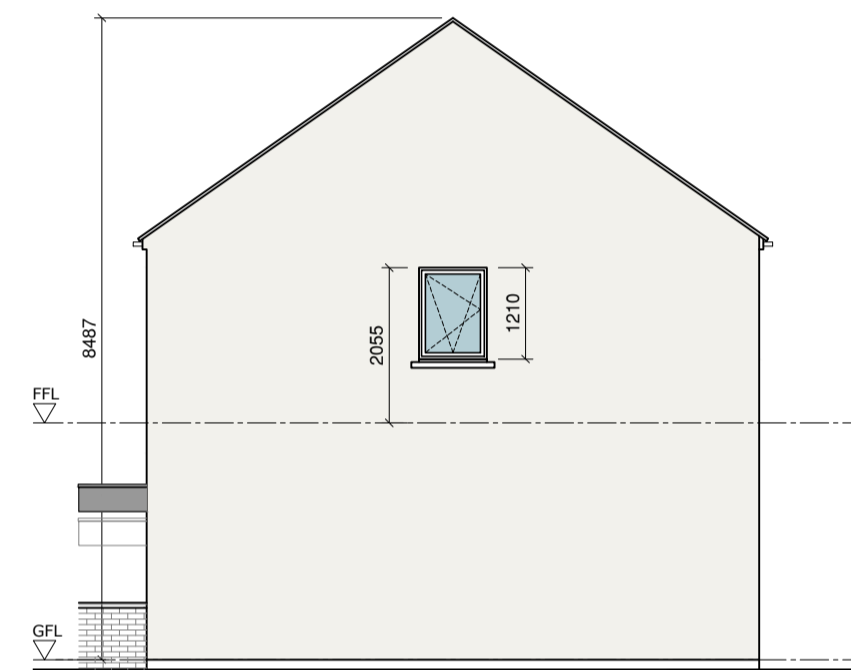
Ground Floor Plan



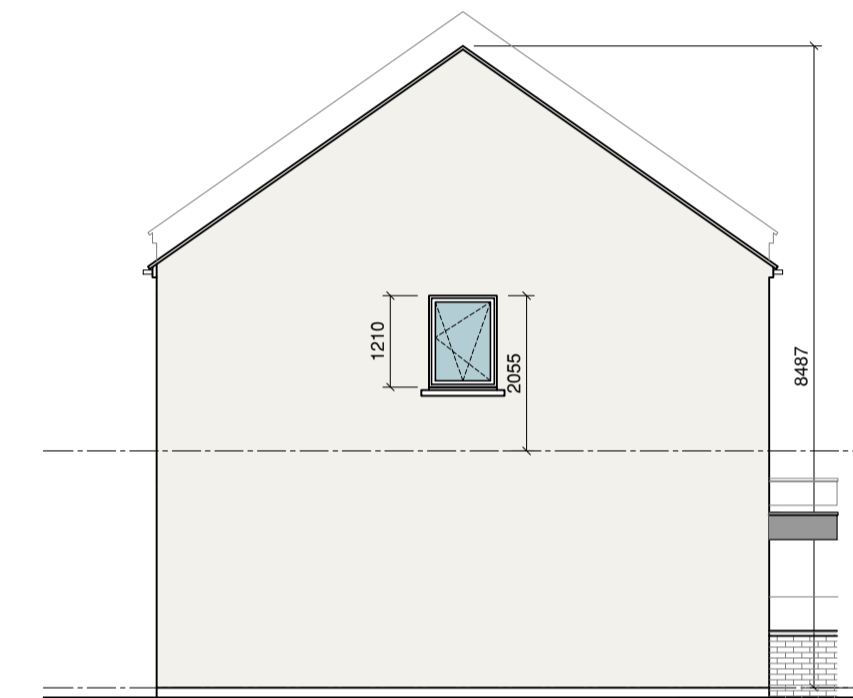
Rear Elevation



First Floor Plan



Side Elevation



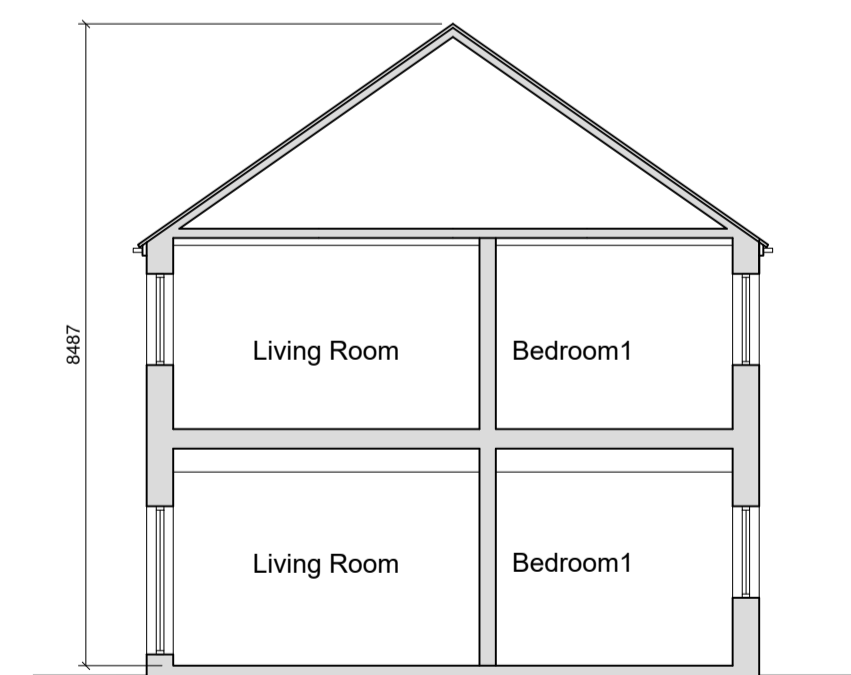
Side Elevation

External Finishes Schedule

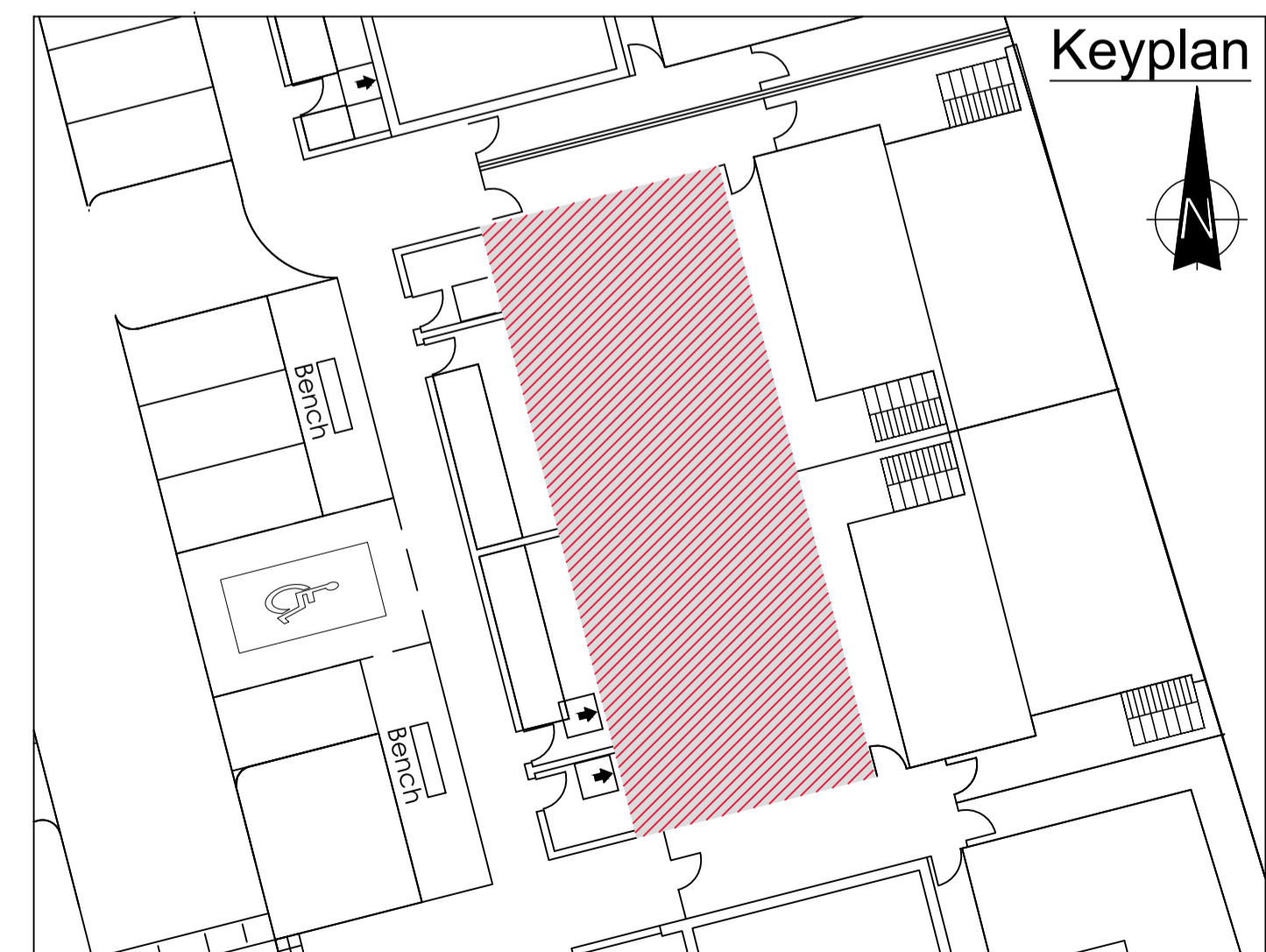
Roof:	Blue/Black Fibre cement Slate
Walls:	Dashed White External Render to houses 900mm low level dark grey Engineered Brick walls at entrances with concrete coping
Windows & Doors:	Grey AluClad
Rain Water Goods:	Black uPVC
Canopy :	Powder Coated Aluminium



Front Elevation



Section AA



REVISION	DATE	DESCRIPTION	BY
-	-	-	-
-	-	-	-
-	-	-	-
-	-	-	-
-	-	-	-
-	-	-	-