

# House Type 24

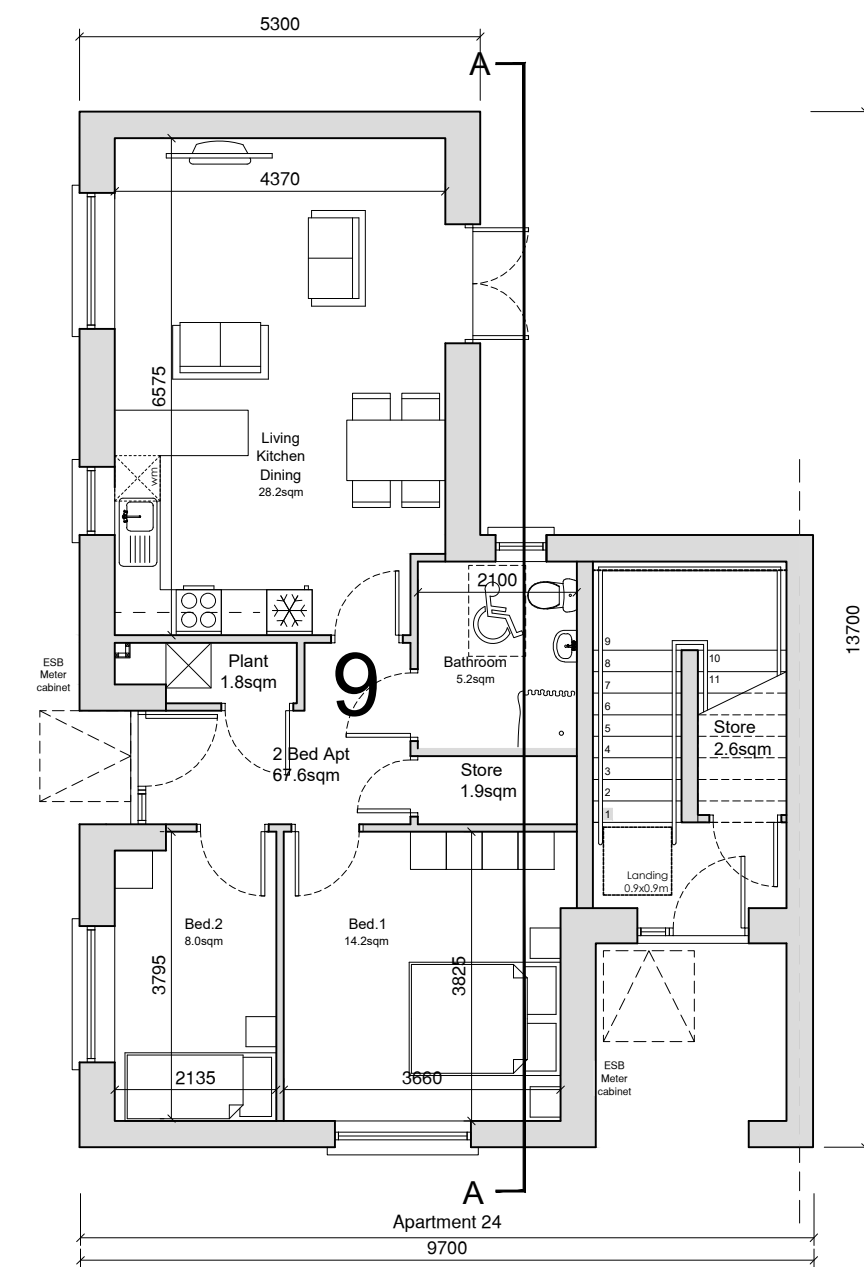
Quality Housing for Sustainable Communities Standards

2 Bedroom / 3 Person (apt) Areas:				
Storage (m <sup>2</sup> )	Aggregate Bedroom Area (m <sup>2</sup> )	Aggregate Living Area (m <sup>2</sup> )	Target Gross Floor Areas (m <sup>2</sup> )	
5 sqm	20.1 sqm	28sqm	63 sqm	Required
GF 3.4sqm** FF 5.1sqm	GF 21.5sqm FF 21.1sqm	GF 28.5sqm FF 28.7sqm	GF 67.5sqm FF 69.33sqm*	Provided

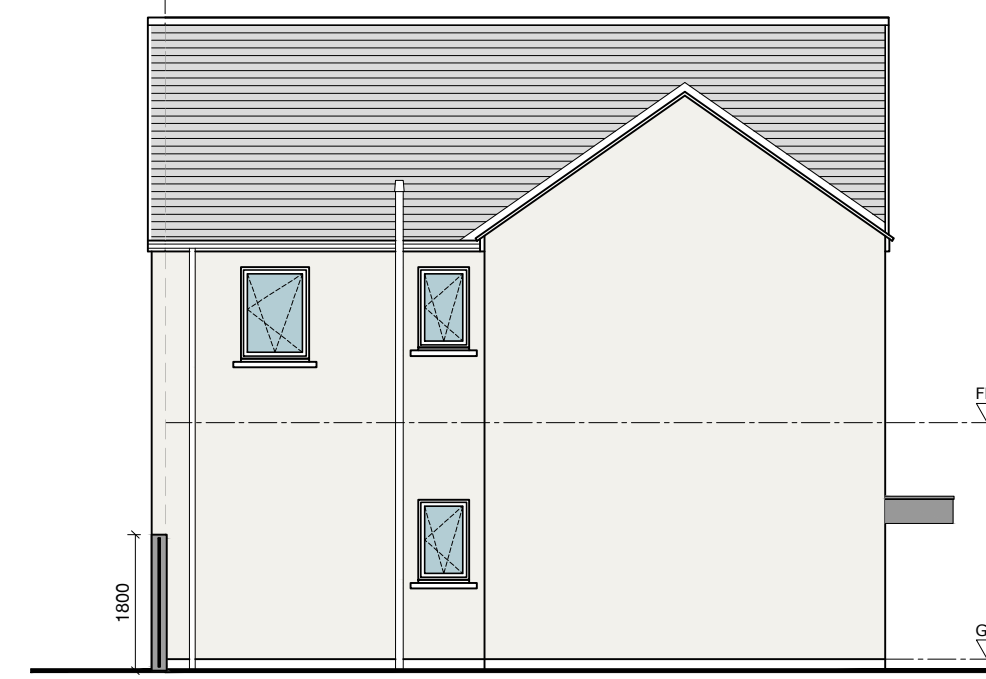
  

2 Bedroom / 3 Person (apt) Widths:					
Living Rm [3 Bed] (m)	Living Rm [2 Bed] (m)	Living Rm [1 Bed] (m)	Double Bedroom (m)	Single Bedroom (m)	
3.8m	3.6m	3.3m	2.8m	2.1m	Required
-	GF 4.37sqm FF 3.3sqm	-	GF 3.36m FF 2.9m	GF 2.14m FF 2.2m	Provided

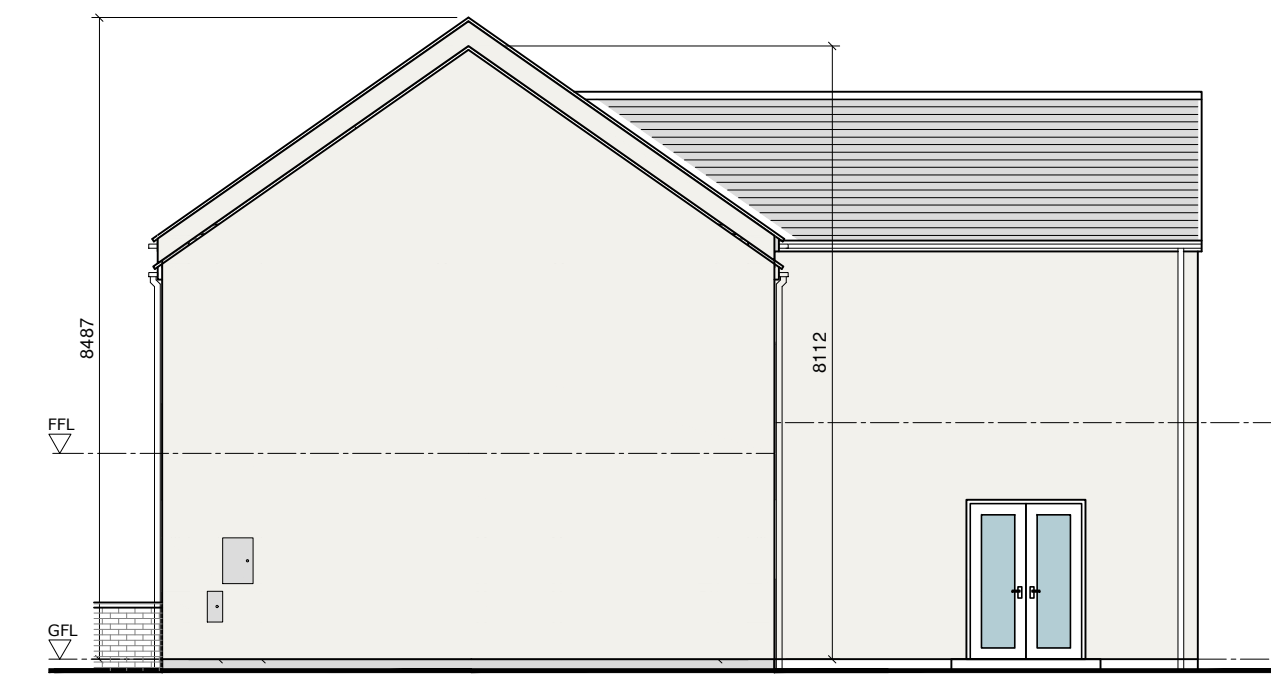
\*Excluding Stairs  
\*\*Additional Storage in External Shed



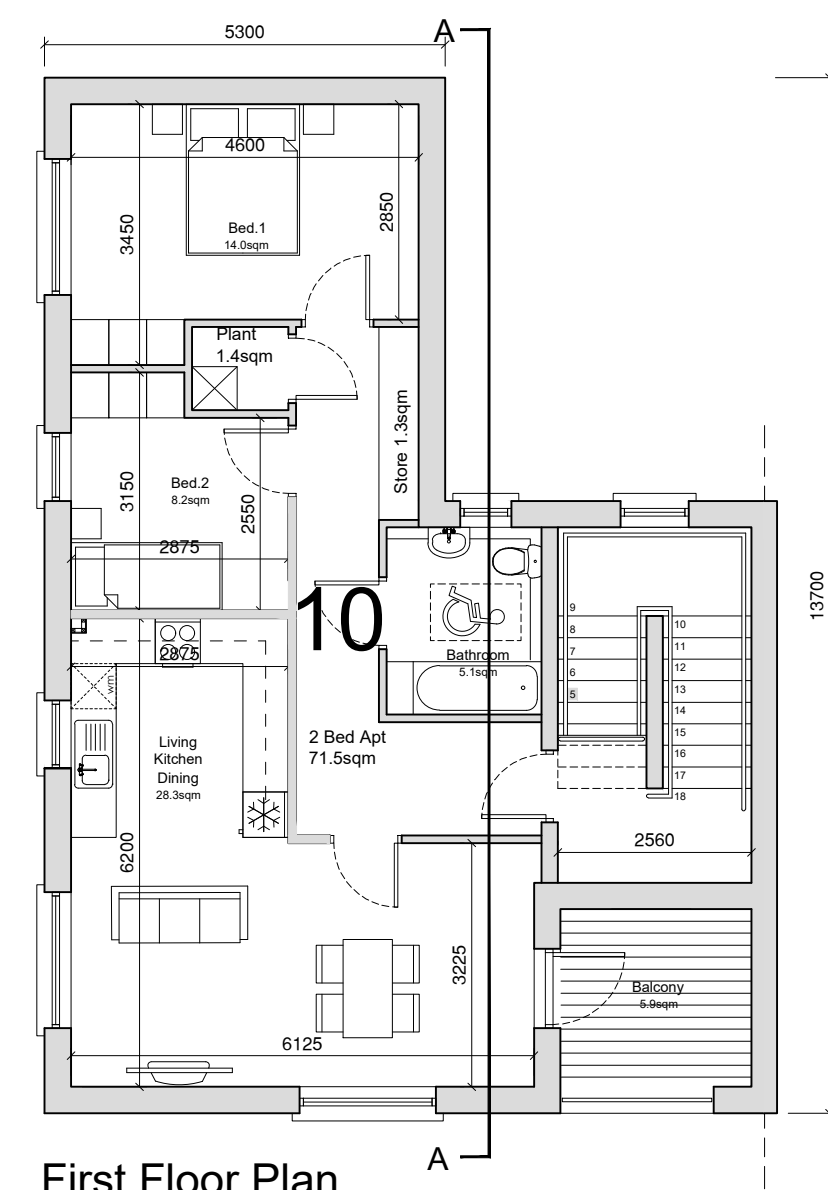
Ground Floor Plan



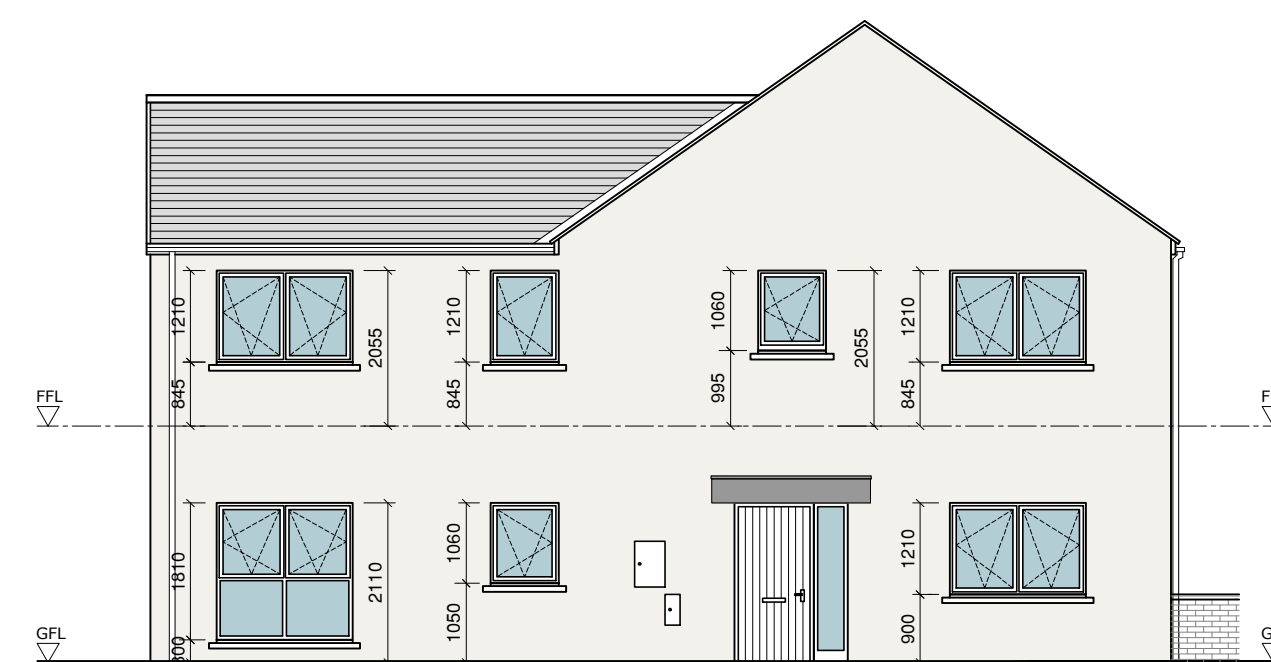
Rear Elevation



Side Elevation



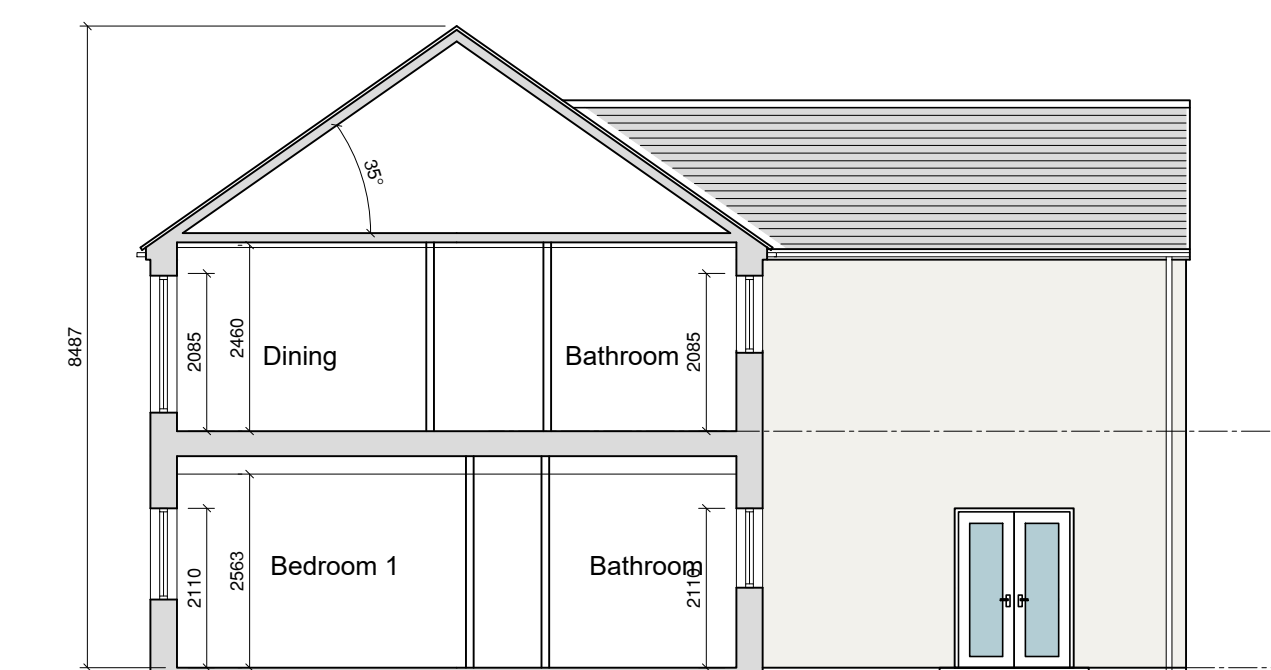
First Floor Plan



Side Elevation



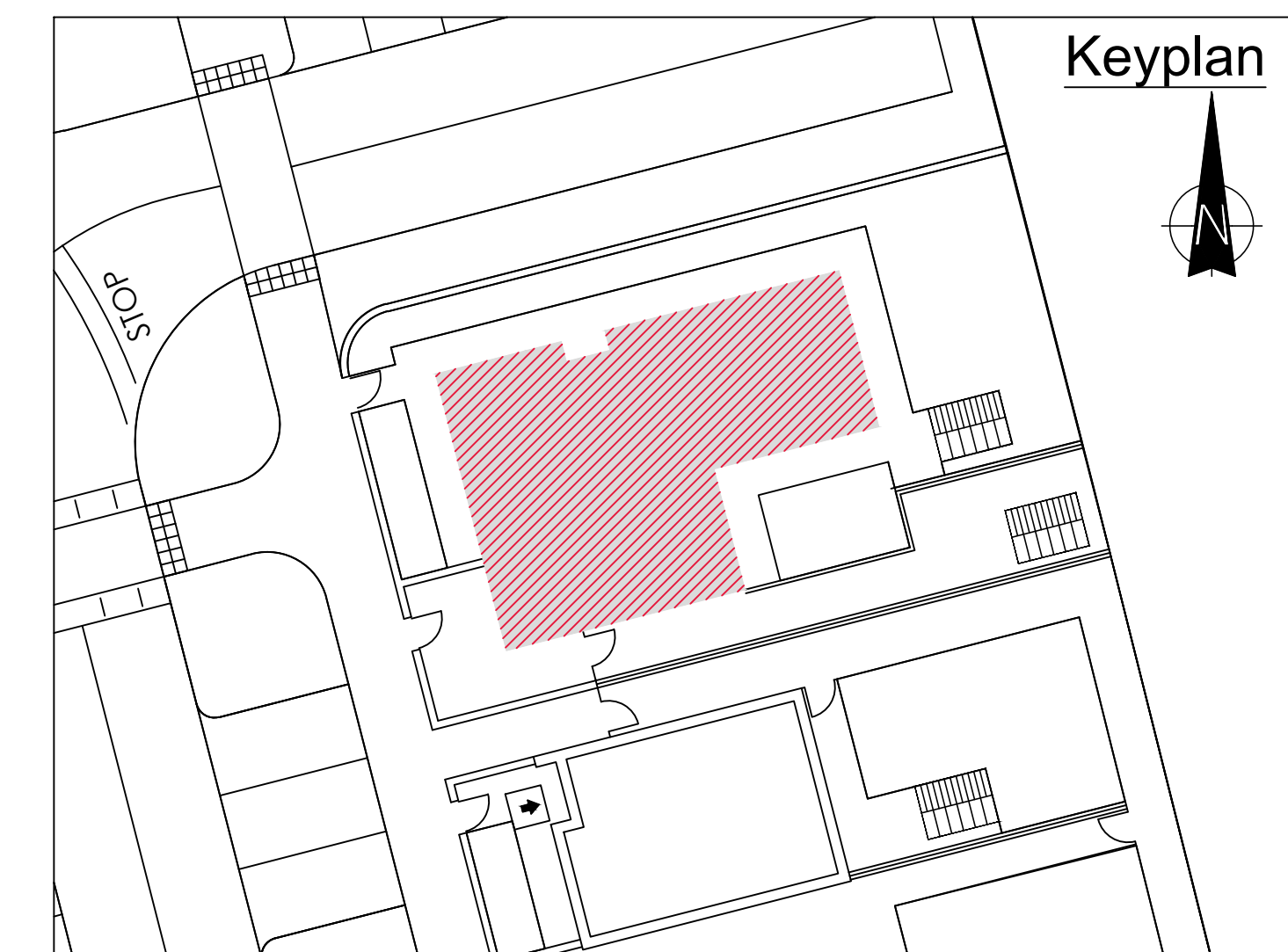
Front Elevation



Section AA

## External Finishes Schedule

Roof:	Blue/Black Fibre cement Slate
Walls:	Dashed White External Render to houses 900mm low level dark grey Engineered Brick walls at entrances with concrete coping
Windows & Doors:	Grey AluClad
Rain Water Goods:	Black uPVC
Canopy :	Powder Coated Aluminium



Keyplan

NOTES

REVISION	DATE	DESCRIPTION	BY
-	-	-	-
-	-	-	-
-	-	-	-
-	-	-	-
-	-	-	-
-	-	-	-