



**Comhairle Contae  
Dhún na nGall**  
Donegal County Council

# PUBLIC INFORMATION EVENT

## LETTERKENNY TOWN – ACTIVE TRAVEL PROJECTS L1007 CIRCULAR ROAD ACTIVE TRAVEL SCHEME & R940 BALLYRAINE ROAD

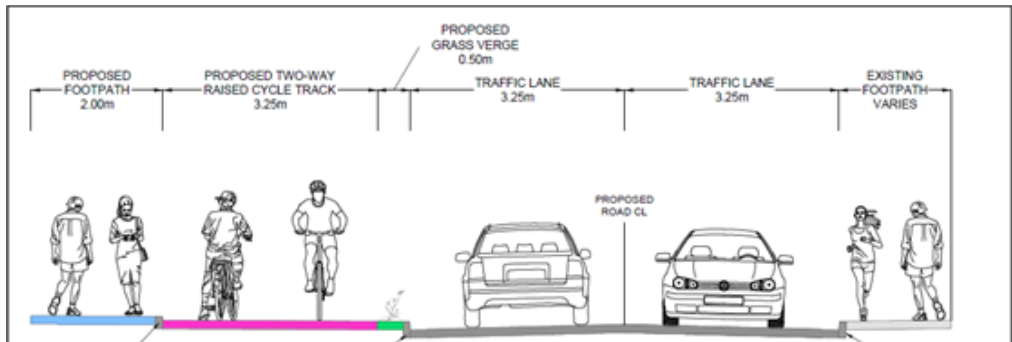
Donegal County Council is seeking to establish high quality continuous footway and cycleway routes in Letterkenny Town, to promote active travel journeys from residential areas to key education, employment, commercial, recreational, retail and tourist destinations.



L1007 Circular Road Active Travel Scheme

The proposal includes:

- Provision of a two-way cycle facility on the north side of the carriageway within the scheme extent.
- Removal of existing centre hatching and narrowing of the carriageway to 6.5m.
- Upgraded pedestrian and cycle crossings including traffic calming and reduced junction radii at side roads.



Rialtas  
na hÉireann  
Government  
of Ireland

Tionscadal Éireann  
Project Ireland  
**2040**

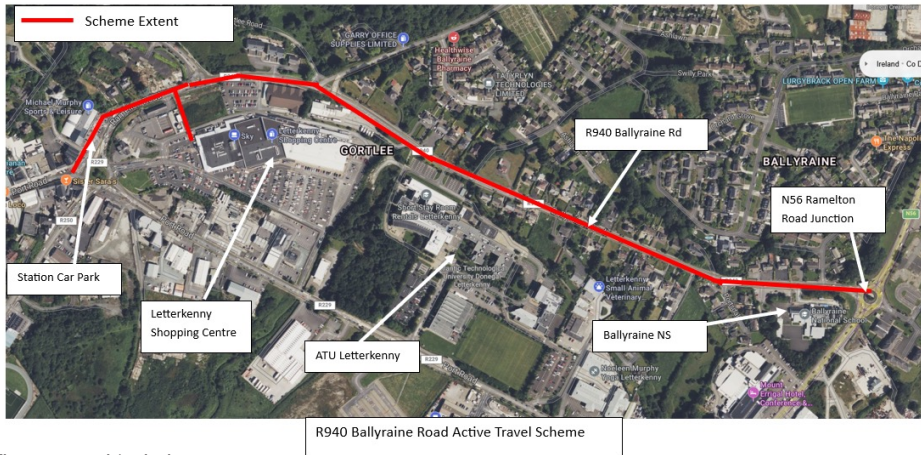


An Roinn Iompair  
Department of Transport

**NTA**  
Údarás Náisiúnta Iompair  
National Transport Authority

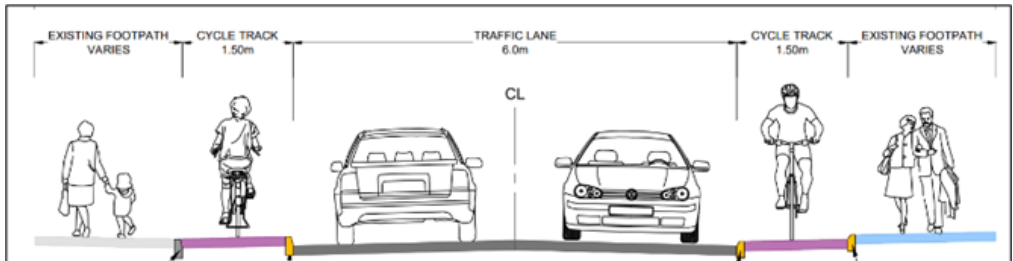
**CLANDILLON**  
CIVIL CONSULTING

**TIONSCADAIL NA FIONNACHTAÍ  
PATHFINDER PROGRAMME**  
Transforming how we travel



The proposal includes:

- The removal of existing lineated cycle lanes and install of segregated one-way cycle lanes including the narrowing of the existing carriageway to 6.0m width generally along the R940 Ballyraine Road from the N56 Ramelton Road Junction to the L1009 Gortlee Road Junction.
- Provision of a two-way cycle facility along the northern side of Ballyraine Road from the L1009 Gortlee Road Junction to L10041 Station Car Park.
- Provision of a shared (vehicle/cycle) facility within L10041 Station Car Park.
- Modification of existing (mini roundabout) Oatfield Junction to incorporate a signalised junction with cyclist and pedestrian facilities.



## Have Your Say!

Both schemes are currently at Phase 4 (Planning) and residents and businesses of the areas, members of the public and interested parties are now invited to participate in the statutory public consultation of both schemes. The aim of the information event is to inform the public of the preliminary designs and to invite feedback on the proposals.

**A Public Display of the design proposals will take place in:**

**The Vestry, Old St. Conal's Church F92TD92  
Tuesday, 25th February 2025  
between 3pm and 7pm**

Alternatively plans and particulars for these proposed developments are also available for inspection at the following locations:

- Online - <https://consult.donegal.ie/> website.
- Letterkenny Public Services Centre, Neil T Blaney Road, Letterkenny, F92 TNY3.
- Donegal County Council, County House, The Diamond, Lifford, Co. Donegal, F93 Y622.

Submissions and observations with respect to the proposed developments may be made in writing to The County Secretariat Office, Donegal County Council, County House, The Diamond, Lifford, Co. Donegal or emailed to [activetravel@donegalcoco.ie](mailto:activetravel@donegalcoco.ie) before 4.00pm on Wednesday, 19th March 2025.